

## IN CASE OF EMERGENCY

### *Should your equipment contact a transmission line:*

1. Call 911 immediately.
2. Call ATC at (262) 506-6199 or call your local utility.
3. Assume objects and area in contact with the power line are energized..

### *If you are not in danger from fire or being struck by the power line:*

- Stay where you are.
- Move equipment away from the power line, if possible.
- Warn others not to approach equipment.

### *If you are in danger and must get off equipment:*

- Jump as far away from the equipment as you can and land with both feet together. No part of your body should touch the equipment and the ground at the same time.
- Hop or shuffle away from the equipment with your feet together to reduce the risk of electric shock.

### *If another person is in danger:*

- Stay away.
- Warn fellow workers to stay away.
- Call 911.

## OSHA RESOURCES

For more information on identifying the hazards of energized power lines, visit: [www.osha.gov/electrical](http://www.osha.gov/electrical).

**Report any damage or concerns to ATC.**

# Work Safely Around Transmission Lines

LEARN MORE:



ATC provides high-voltage electric transmission service in Wisconsin, Michigan, Minnesota and Illinois.

**Visit [atcllc.com](http://atcllc.com)**

Phone: (866) 899-3204 | Email: [info@atcllc.com](mailto:info@atcllc.com)



## Work safely around transmission lines

An electric transmission line is a set of power lines, called conductors, that carry high-voltage electricity. Transmission lines are not insulated. Getting too close to a transmission line with your body, equipment or tools can result in severe injury or death. Working near power lines carries risk whether you operate heavy equipment, trim or cut trees, or use ladders and handheld tools. It is your responsibility to work safely to protect yourself, your crew and the public.



## Shocking facts

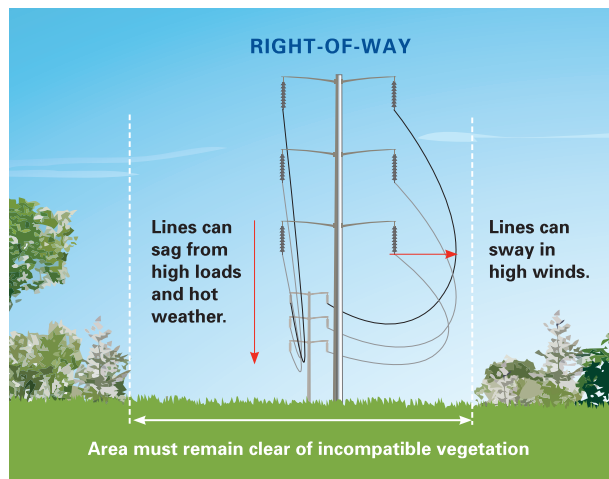
- Almost 200 construction workers die each year in the United States from contact with electrical energy.
- Direct or indirect contact with power lines is the most common cause of electrocution according to the Occupational Safety and Health Administration.
- Electricity causes about 15% of all fatalities in the tree care industry.

## Look up and live

- **⚠ NOTE:** Only qualified personnel should trim or cut trees near transmission line rights-of-way.
- Stay at least 20 feet away from transmission lines to ensure your safety. This includes people, equipment, fallen trees, etc.

## Know the hazards

- **⚠ NOTE:** Objects do not have to make physical contact with conductors for electricity to flow. Electricity will arc through the air when something is close to the bare conductor.
- Transmission lines change position constantly and will sag under heat and sway in wind.
- Smoke can become conductive and create an electrical path to ground – do not burn under transmission lines.
- Kites or balloons can become entangled in power lines and may cause a fire or outage.
- Energy can still be flowing and dangerous even if you don't see arcing and sparking.



## Avoid underground hazards



Call your state's underground utility locating system (**811**) at least three full business days before digging to have underground utility lines marked. It is free and required by law.



Grade changes of more than one foot must be reviewed and approved by ATC to ensure there are no adverse impacts to structures or code conflicts.

Call us before starting work at **(866) 899-3204**.

## Grow Smart near power lines

Consult an ATC expert before planting near high-voltage electric transmission line easement areas. Call us at **(866) 899-3204** or to learn more visit: **atc-GrowSmart.com**

