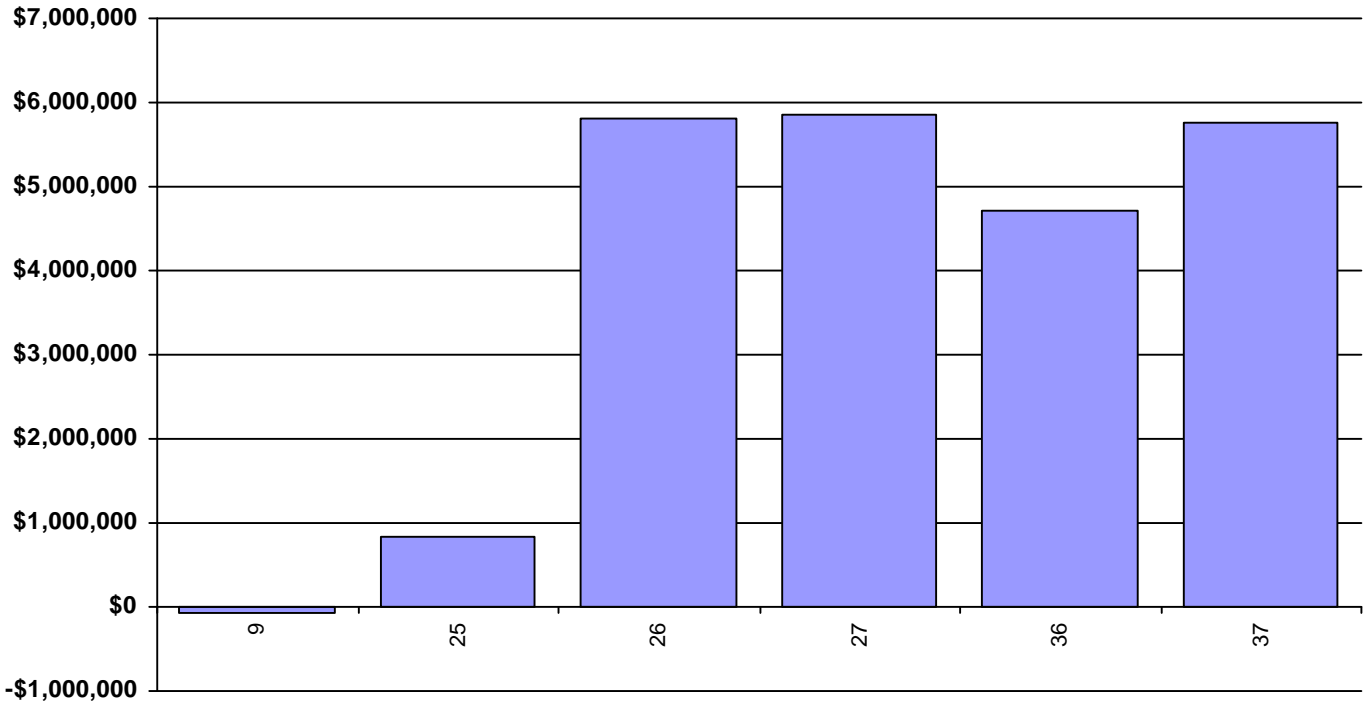
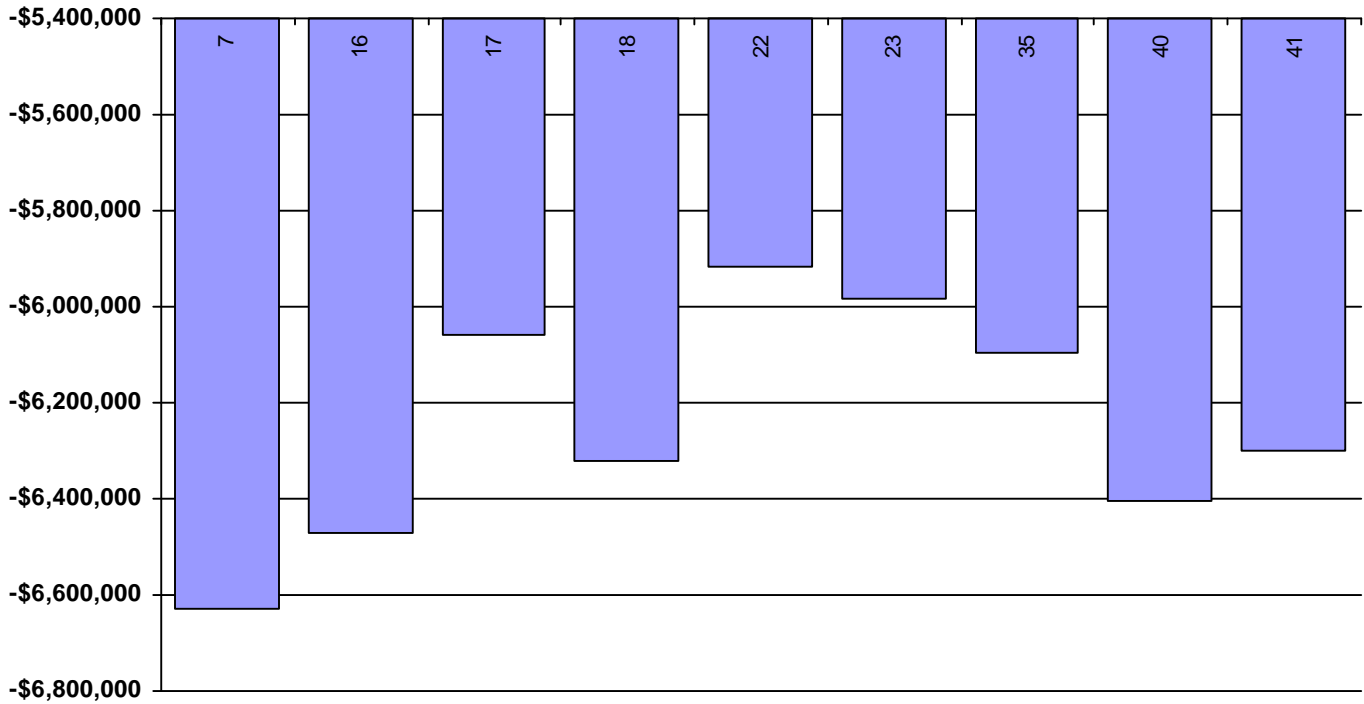


Low Voltage (Lore-Turkey River-Cassville-Nelson Dewey)



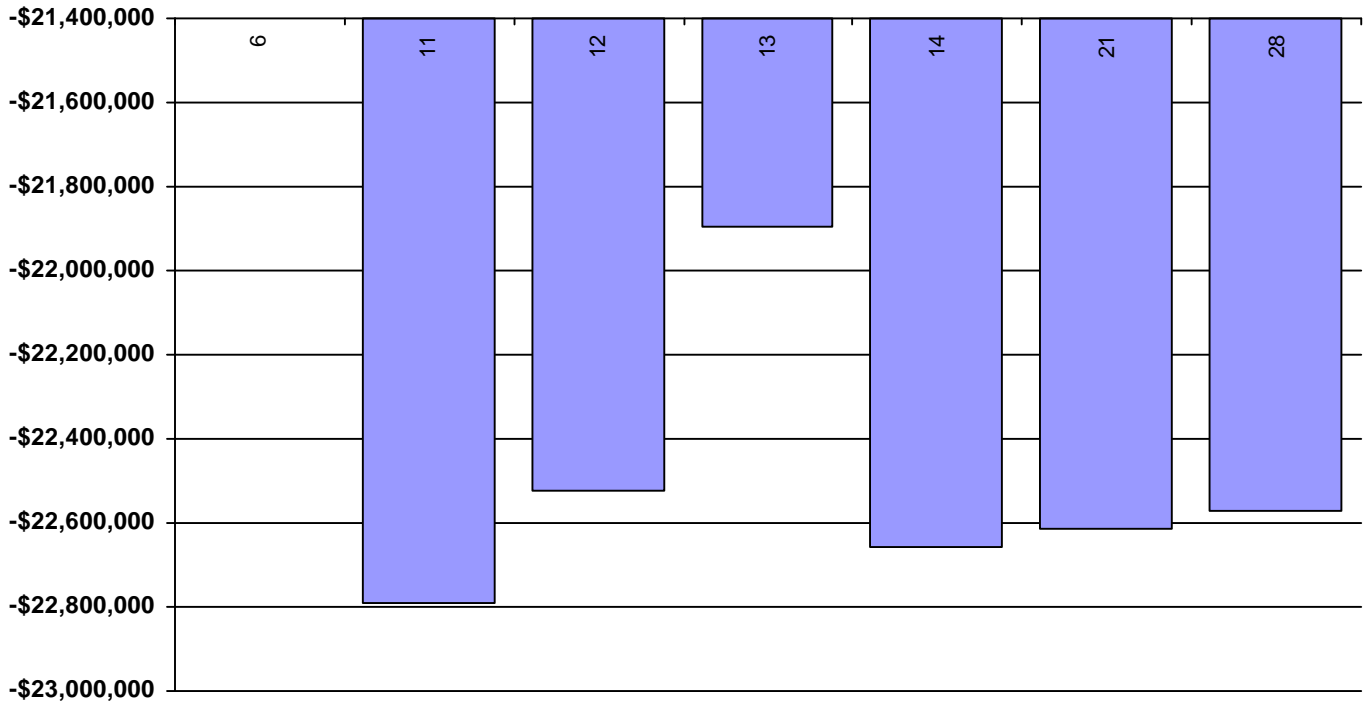
Key:	Package:	Capital Costs:	Market Savings:	Annualized Cap. Cost:	Difference:
	9 _No Fixes	\$14,719,000	\$1,248,674	\$1,324,710	(\$76,036)
	25 Potosi - Hillman 138 kV	\$14,753,413	\$2,149,536	\$1,327,807	\$821,729
	26 Potosi - Hillman 138 kV PAD 2nd Xfmr + PAD-TLR Double Circuit	\$32,038,955	\$8,683,169	\$2,883,506	\$5,799,663
	27 Potosi - Hillman 138 kV PAD 2nd Xfmr + PAD-TLR Double Circuit Hazelton - Dundee 161 kV	\$33,013,619	\$8,833,378	\$2,971,226	\$5,862,152
	36 Potosi - Hillman 138 kV PAD 2nd Xfmr + PAD-TLR Double Circuit Hazelton - Dundee 161 kV North Monroe - Sugar River 69 kV	\$43,011,619	\$8,589,332	\$3,871,046	\$4,718,286
	37 Potosi - Hillman 138 kV PAD 2nd Xfmr + PAD-TLR Double Circuit Hazelton - Dundee 161 kV Yahara River-Sun Prairie 69kV	\$35,174,219	\$8,917,599	\$3,165,680	\$5,751,919

Byron - North Madison 345 kV



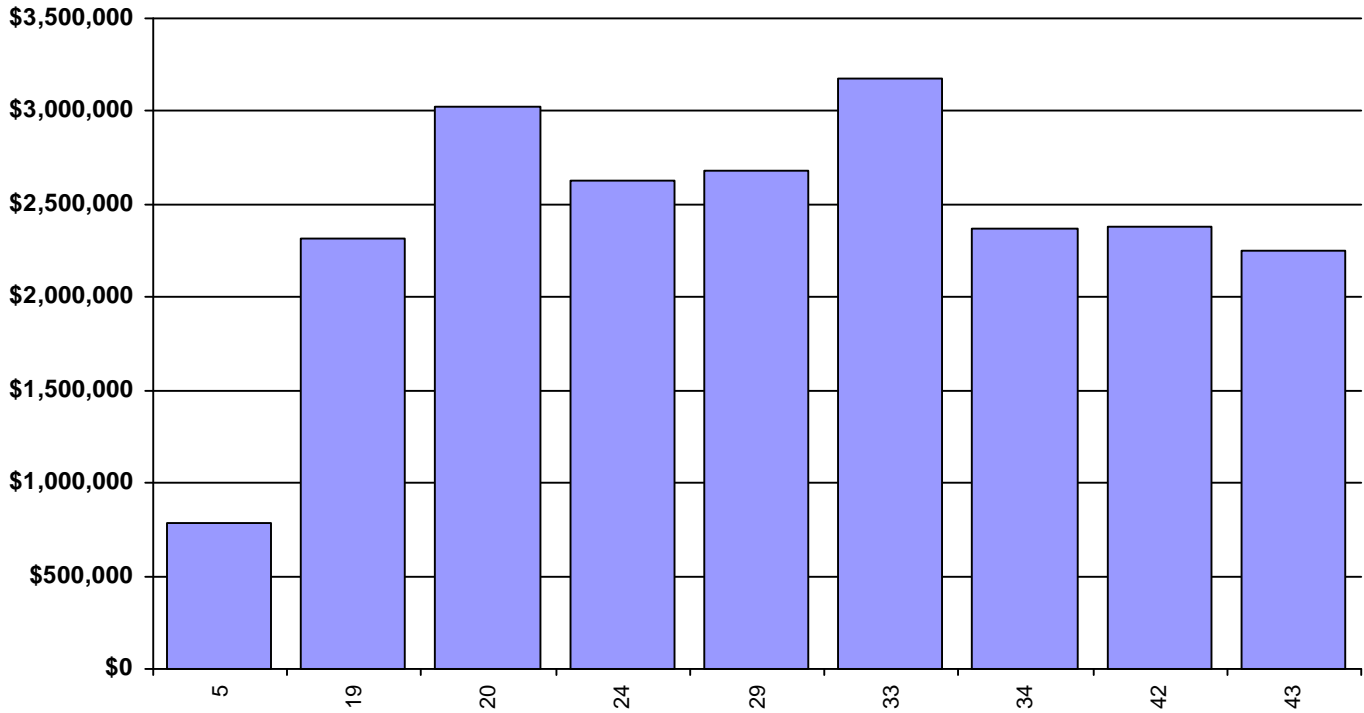
Key:	Package:	Capital Costs:	Market Savings:	Annualized Cap. Cost:	Difference:
	7 _No Fixes	\$185,074,700	\$10,028,700	\$16,656,723	(\$6,628,023)
	16 Cassville - Nelson Dewey 161 kV	\$186,841,700	\$10,343,562	\$16,815,753	(\$6,472,191)
	17 Potosi - Hillman 138 kV	\$185,109,113	\$10,599,953	\$16,659,820	(\$6,059,867)
	18 Potosi - Hillman 138 kV Cassville - Nelson Dewey 161 kV	\$186,876,113	\$10,496,759	\$16,818,850	(\$6,322,091)
	22 Potosi - Hillman 138 kV Hazelton - Dundee 161 kV	\$186,083,777	\$10,832,182	\$16,747,540	(\$5,915,358)
	23 Potosi - Hillman 138 kV Hazelton - Dundee 161 kV Arnold - Hazelton 345 kV	\$186,186,380	\$10,775,001	\$16,756,774	(\$5,981,773)
	35 Potosi - Hillman 138 kV Hazelton - Dundee 161 kV Arnold - Hazelton 345 kV Dysart - Washburn 161 kV	\$187,196,284	\$10,749,767	\$16,847,666	(\$6,097,899)
	40 Potosi - Hillman 138 kV Hazelton - Dundee 161 kV Dysart - Washburn 161 kV	\$187,093,681	\$10,436,338	\$16,838,431	(\$6,402,093)
	41 Potosi - Hillman 138 kV Hazelton - Dundee 161 kV Hazelton 345/161 kV Transformer	\$188,498,377	\$10,665,335	\$16,964,854	(\$6,299,519)

Salem - North Madison 345 kV



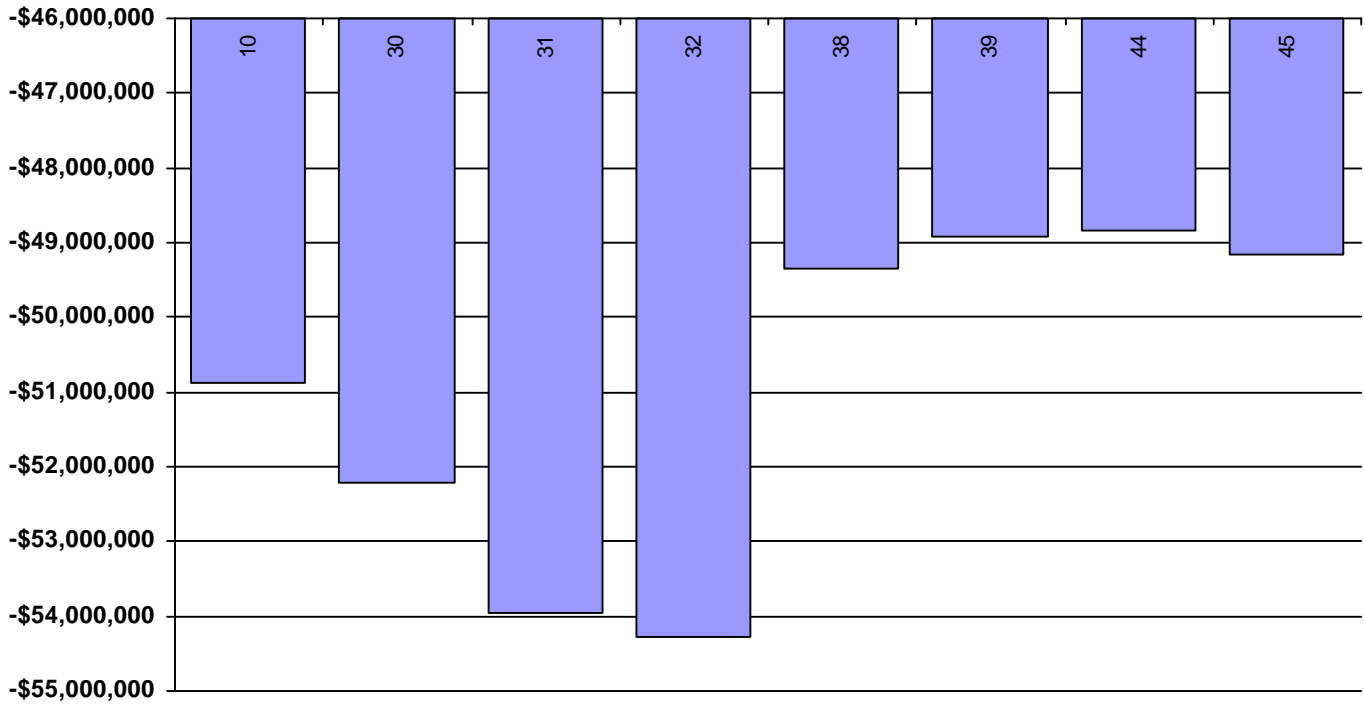
Key:	Package:	Capital Costs:	Market Savings:	Annualized Cap. Cost:	Difference:
	6 _No Fixes	\$343,921,100		\$30,952,899	
	11 Salem - Maquoketa 161 kV	\$351,301,100	\$8,824,600	\$31,617,099	(\$22,792,499)
	12 Salem - Maquoketa 161 kV Davenport - East Calamus 161 kV	\$351,322,565	\$9,097,523	\$31,619,031	(\$22,521,508)
	13 Salem - Maquoketa 161 kV Davenport - East Calamus 161 kV Hazelton - Dundee 161 kV	\$352,297,229	\$9,811,582	\$31,706,751	(\$21,895,169)
	14 Salem - Maquoketa 161 kV Davenport - East Calamus 161 kV Hazelton - Dundee 161 kV Hazelton 345/161 kV Transformer	\$354,711,829	\$9,264,952	\$31,924,065	(\$22,659,113)
	21 Salem - Maquoketa 161 kV Davenport - East Calamus 161 kV Hazelton - Dundee 161 kV PAD 2nd Xfmr + PAD-TLR Double Circuit	\$369,582,771	\$10,647,779	\$33,262,449	(\$22,614,670)
	28 Salem - Maquoketa 161 kV Davenport - East Calamus 161 kV Hazelton - Dundee 161 kV PAD 2nd Xfmr + PAD-TLR Double Circuit Dysart - Washburn 161 kV	\$370,592,675	\$10,782,078	\$33,353,341	(\$22,571,263)

Paddock - Rockdale 345 kV Circuit #2



Key:	Package:	Capital Costs:	Market Savings:	Annualized Cap. Cost:	Difference:
	5 _No Fixes	\$66,360,500	\$6,755,355	\$5,972,445	\$782,910
	19 Potosi - Hillman 138 kV	\$66,394,913	\$8,293,252	\$5,975,542	\$2,317,710
	20 Potosi - Hillman 138 kV Cassville - Nelson Dewey 161 kV	\$68,161,913	\$9,162,112	\$6,134,572	\$3,027,540
	24 Potosi - Hillman 138 kV Cassville - Nelson Dewey 161 kV Lore - Turkey River 161 kV	\$74,935,913	\$9,370,621	\$6,744,232	\$2,626,389
	29 Potosi - Hillman 138 kV Cassville - Nelson Dewey 161 kV Lore - Turkey River 161 kV Hazelton - Dundee 161 kV	\$75,910,577	\$9,515,241	\$6,831,952	\$2,683,289
	33 Potosi - Hillman 138 kV Cassville - Nelson Dewey 161 kV Hazelton - Dundee 161 kV	\$69,136,577	\$9,400,193	\$6,222,292	\$3,177,901
	34 Potosi - Hillman 138 kV Cassville - Nelson Dewey 161 kV Lore - Turkey River 161 kV Hazelton - Dundee 161 kV Dysart - Washburn 161 kV	\$76,920,481	\$9,297,008	\$6,922,843	\$2,374,165
	42 Potosi - Hillman 138 kV Cassville - Nelson Dewey 161 kV Hazelton - Dundee 161 kV Second Salem Transformer	\$71,636,577	\$8,829,966	\$6,447,292	\$2,382,674
	43 Potosi - Hillman 138 kV Cassville - Nelson Dewey 161 kV Hazelton - Dundee 161 kV Second Salem Transformer Lore - Turkey River 161 kV	\$78,410,577	\$9,306,162	\$7,056,952	\$2,249,210

Prairie Island - Columbia 345 kV



Key:	Package:	Capital Costs:	Market Savings:	Annualized Cap. Cost:	Difference:
10	_No Fixes	\$620,642,000	\$4,980,844	\$55,857,780	(\$50,876,936)
30	West Middleton - North Madison 345 kV Potosi - Hillman 138 kV PAD 2nd Xfmr + PAD-TLR Double Circuit	\$683,037,655	\$9,254,391	\$61,473,389	(\$52,218,998)
31	West Middleton - North Madison 345 kV Potosi - Hillman 138 kV	\$665,752,113	\$5,962,023	\$59,917,690	(\$53,955,667)
32	West Middleton - North Madison 345 kV	\$665,717,700	\$5,627,669	\$59,914,593	(\$54,286,924)
38	PAD 2nd Xfmr + PAD-TLR Double Circuit	\$637,927,542	\$8,075,886	\$57,413,479	(\$49,337,593)
39	PAD 2nd Xfmr + PAD-TLR Double Circuit Potosi - Hillman 138 kV	\$637,961,955	\$8,484,763	\$57,416,576	(\$48,931,813)
44	PAD 2nd Xfmr + PAD-TLR Double Circuit Potosi - Hillman 138 kV Cassville - Nelson Dewey 161 kV	\$639,728,955	\$8,730,262	\$57,575,606	(\$48,845,344)
45	PAD 2nd Xfmr + PAD-TLR Double Circuit Potosi - Hillman 138 kV Cassville - Nelson Dewey 161 kV Salem - Maquoketa 161 kV	\$647,108,955	\$9,090,668	\$58,239,806	(\$49,149,138)