

A large, light gray, stylized sun graphic is positioned on the left side of the slide. It features a central white circle with rays extending outwards, forming a semi-circle. The rays are represented by various geometric shapes, including triangles and trapezoids, creating a textured, sunburst effect.

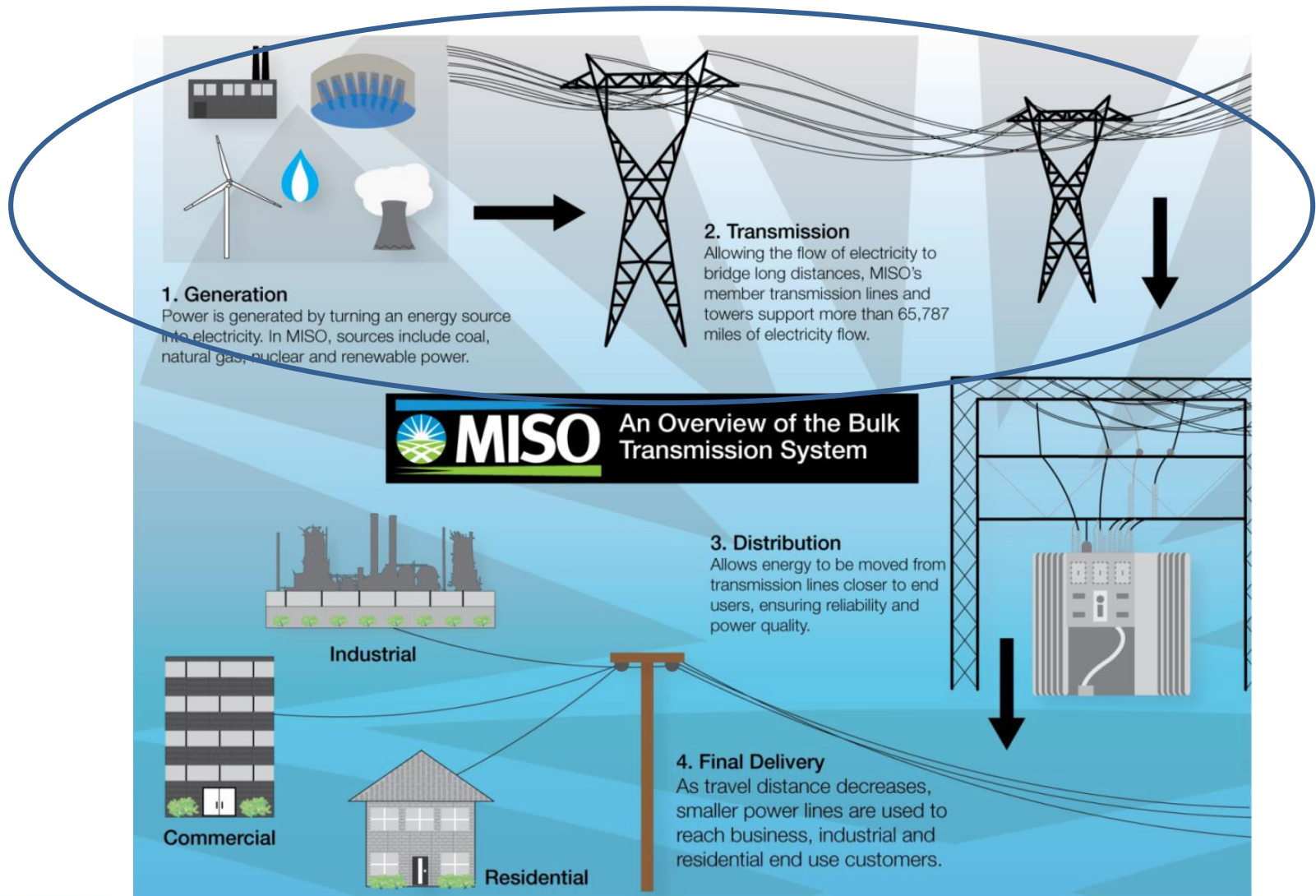
# **2014 U. P. Energy Summit: MISO Perspective**

Melissa Seymour,  
Executive Director,  
MISO  
October 28, 2014

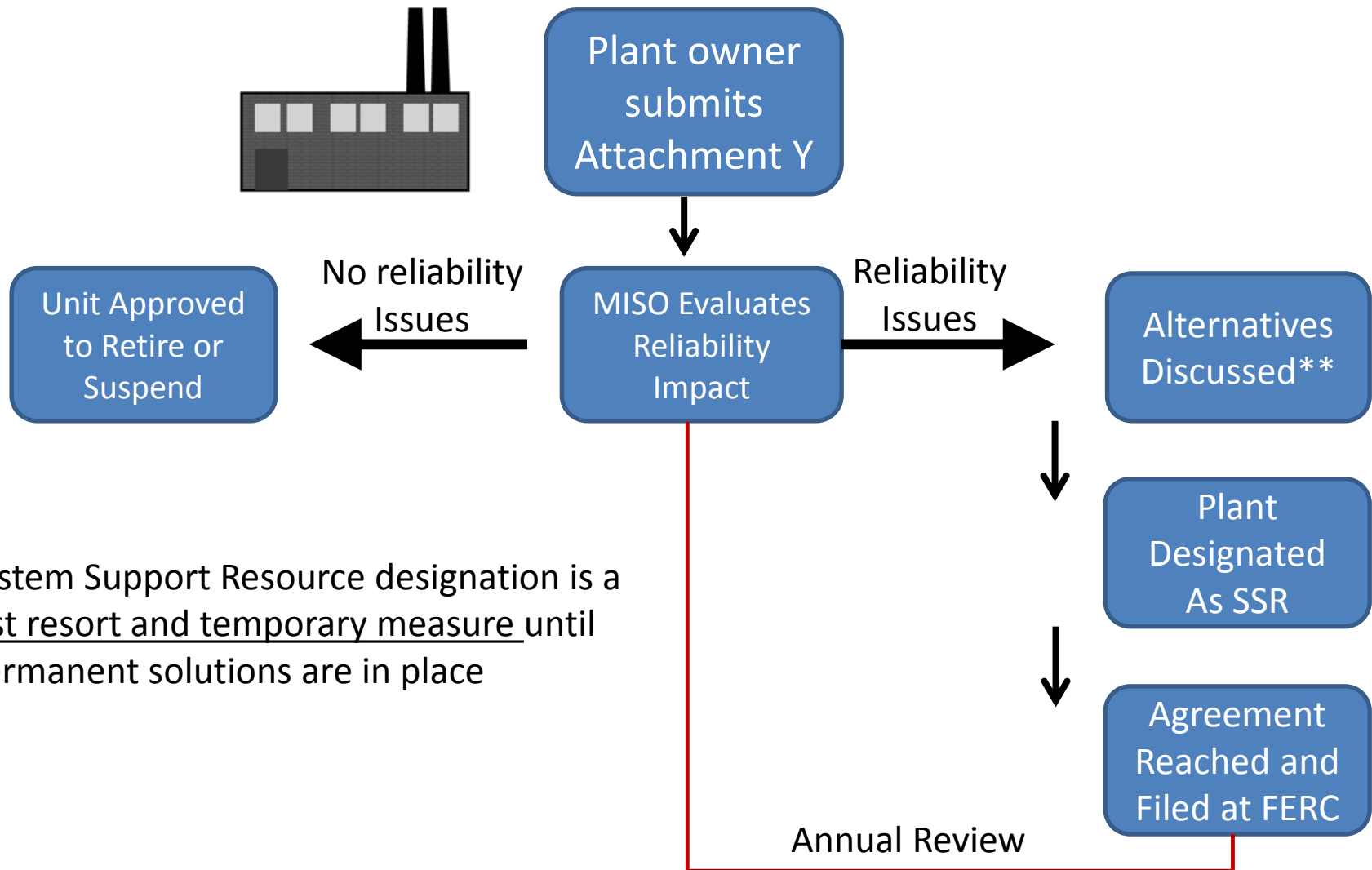
# Key Takeaways

- MISO's primary responsibility is to maintain reliability in its footprint - "Keeping the lights on"
- One way MISO does this is by evaluating generator suspension or retirement requests to determine reliability impacts
- MISO is committed to working with stakeholders to identify solutions that will solve the electric challenges facing Michigan's Upper Peninsula.

# MISO's Role is to Manage Flows on the Transmission System by Directing Generator Usage



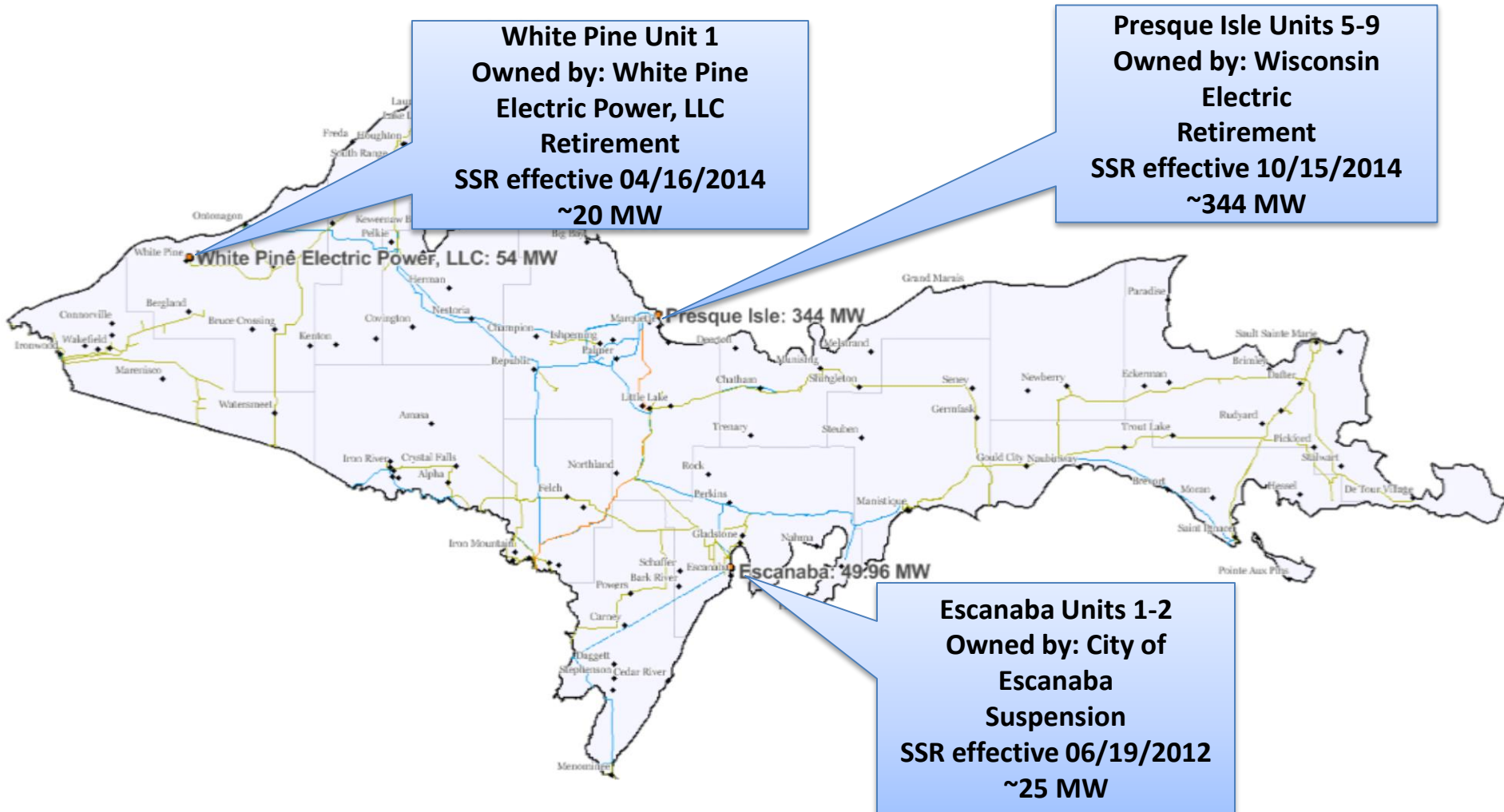
# System Support Resource (SSR) Process



System Support Resource designation is a last resort and temporary measure until permanent solutions are in place

\*\*can lead to permission to retire if alternatives emerge or can be expedited and/or generator owner provides enough Attachment Y lead time

# System Support Resources in the Upper Peninsula



# Solutions Considered as Alternatives to SSRs

## Demand Response

- Optimized load reductions identified
- Solutions must be contractually arranged

## New Generation

- Queued generation in area examined
- Solutions must be committed to (Interconnection Agreements)

## New Transmission

- Already planned transmission solutions considered
- New transmission solutions identified and expedited

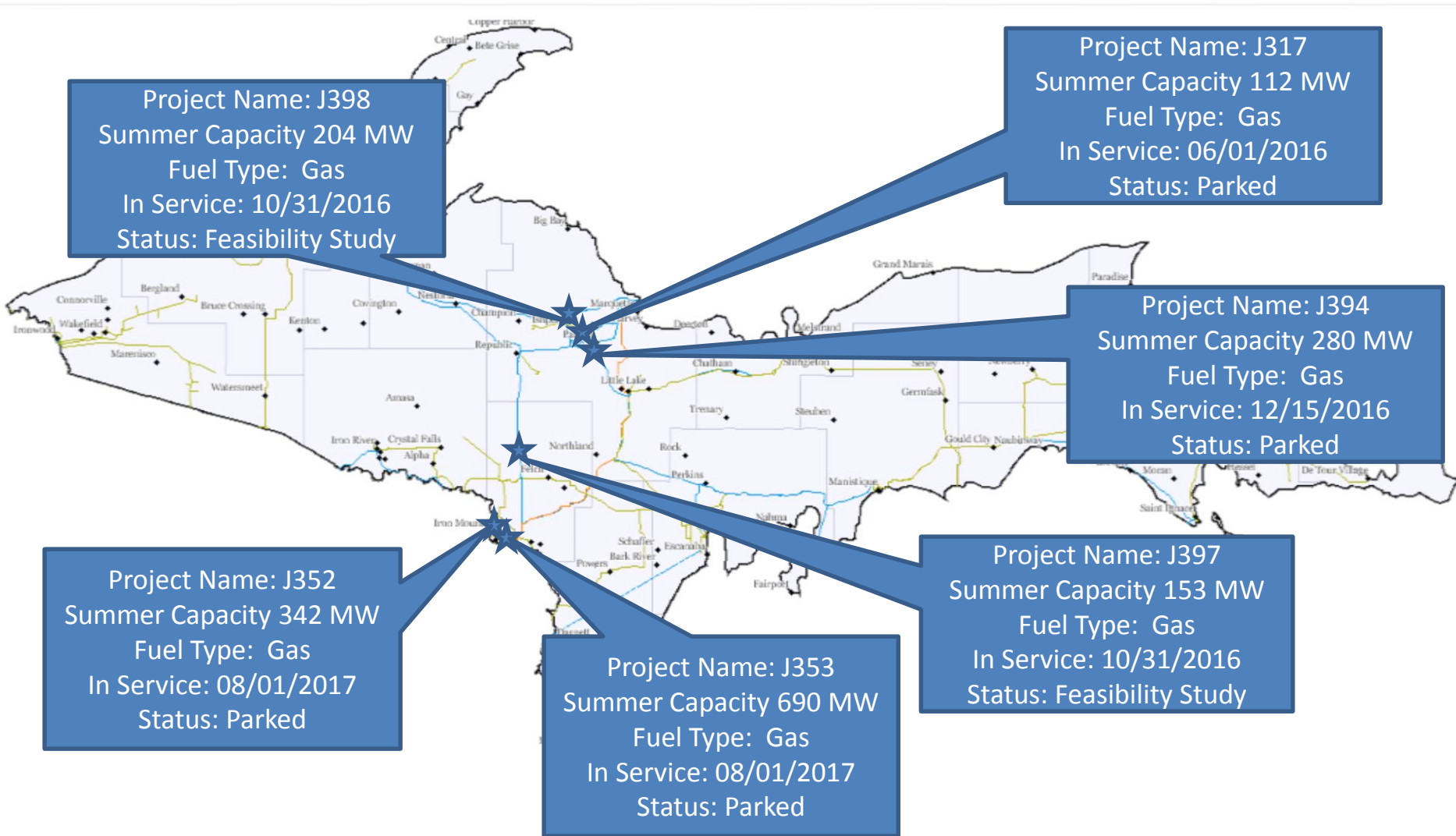
# Available Solutions Pending for UP SSRs

**Escanaba** – Previously approved transmission project will eliminate the need for this unit as a SSR. ATC implementing transmission projects that will be in service in 2016.

**White Pine** – New transmission project in development. Estimated time to complete the transmission rebuild is 5-6 years.

**Presque Isle** – MISO and ATC continue to develop solutions with regular stakeholder meetings. Combined transmission and new generation solutions under consideration (new generation in queue) to expedite SSR termination.

# Generator Interconnection Projects Near Presque Isle





**For additional information please contact:**  
**[MSeymour@misoenergy.org](mailto:MSeymour@misoenergy.org)**