



Network Customer Meeting

**State Regulatory Affairs and
Local Relations Update
February 26, 2009**

**Steve Parker
State Regulatory Affairs**

**David Hovde
Local Relations**

CA/CPCN Applications (Filed/Ordered/Under Review)

<i>Project Name</i>	<i>Date Filed</i>	<i>PSCW Review Status</i>
Rockdale-W. Middleton New 345 kV Line [CPCN]	10/15/2007	<u>Public Hearings:</u> Mar. 24 & 25, 2009 1 pm & 6 pm <u>Technical Hearings:</u> Mar. 31 to Apr. 3, 2009 - 9 am
Nelson-Dewey G-T Interconnection [CPCN]	7/22/2008	On Hold
Rebuild Arpin-Rocky Run 345 kV Line [CA]	9/29/2008	Under Review Order Expected: Mar. 2009
Y33 (Brodhead-South Monroe) 69 kV Rebuild [CA]	9/29/2008	Under Review Order Expected: Mar. 2009
Kewaunee Switchyard Improvements [CA]	11/17/2008	Under Review Order Expected: Oct. 2009

CA/CPCN Applications (to be filed)

<i>Project Name</i>	<i>To be Filed 2009</i>	<i>To be Filed 2010-2012</i>
Canal-Dunn Road New 138 kV Line [CPCN]	Oct	
Clear Lake-Woodmin T-D Interconnection & 115 kV Line [CPCN]	Dec	
Point Beach Nuclear Plant Uprate Interconnection	Dec	
Monroe County-Council Creek 161 kV Conversion [CPCN/CA?]		Feb 2010
Loop Nine Springs-Pflaum 69 kV Line In/Out of Femrite Substation [CA]		Jan 2011
Dodge County, Phase 2 (Horicon-E. Beaver Dam 138 kV Line) [CPCN]		Jan 2011
South Lake Geneva-North Lake Geneva		Oct 2011
Lake Delton-Birchwood 138 kV Line [CPCN]		Aug 2012
Shoto-Custer 138 kV Line [CA]		Nov 2012

Communication and Public Outreach:

Projects, right-of-way maintenance and vegetation management

*David Hovde
Local Relations*

Our Outreach Activities

- Few new proposals for large projects involving new right-of-way
- Focusing on re-builds and maintenance work
- Using similar approaches:
 - Door-to-Door
 - A lot of direct mail
 - Open Houses
 - Personal local government visits
 - Media outreach
 - Involvement of planning

Major 345 kV Projects

Rockdale-West Middleton (Dane County)

- Public outreach conducted 2006 through August 2007
- CPCN application filed Oct. 16, 2007
- Application deemed complete July 2008
- Final EIS issued Feb. 19, 2009
- Public hearing March 24–25; technical hearings March 31–April 3
 - Expect media coverage

Major 345 kV Projects (continued)

Paddock-Rockdale Line (Dane & Rock Counties)

- “Access” project to facilitate MISO regional market
- CPCN issued June 13, 2008
- Construction under way
- In-service next spring - 2010

Major 345 kV Projects (continued)

Gardner Park-Central Wisconsin & Morgan-Werner West Lines

- The projects are on schedule to meet their planned in-service dates of Dec. 1, 2009
- Gardner Park – Central Wisconsin
 - project over 93% complete
(GDP-773: April '09; WHB-CAE: Mar. '09)
- Morgan – Werner West
 - project over 72% complete
(Incl. 138kV; CTV-HWY22: April '09; HWY22-WCL: Dec. '09)



Major 138 kV Projects

Fitchburg (Oak Ridge)-Verona (Dane Co.)

- CPCN issued on January 23, 2008
- Oak Ridge Substation construction under way; work on interconnection to begin soon
- Oak Ridge Substation in service June 2009; T-Line in-service June 2010

N. Madison-Huiskamp (Waunakee; Dane Co.)

- CPCN issued on July 20, 2007
- Pre-construction open house held in August 2008
- Construction in progress; on schedule for May 2009 in-service

Major 138 kV Projects (continued)

Cranberry-Conover-Iron River-Plains (Vilas, Forest, Florence—and UP Michigan)

- Segment 1 – energized June 2008
- Segment 2 – upgrade from 69 kV to 138 kV from Conover – Iron Grove; placed in service Feb. 19, 2009
- Segment 3 – engineering is completed; construction has started with in-service scheduled for October 2009
- Segment 4 – engineering ongoing; construction start in November 2009; in-service June 2010

138 kV Projects (continued)

Jefferson County

- NEV issues resolved; distribution to be buried on opposite side of road
- Pre-construction open house held Nov. 12
- T-Line construction on portions underway
- Southern portion to be place in service in July 2009; northern portion November 2009

Public Outreach on Other Projects

Canal – Dunn Road: 8-mile, 69/138 kV lines
(Sturgeon Bay to the Town of Sevastopol)

- Open house in October 2008
- Open house in fall 2009 prior to CPCN application filing

Clearlake Substation – Woodmin

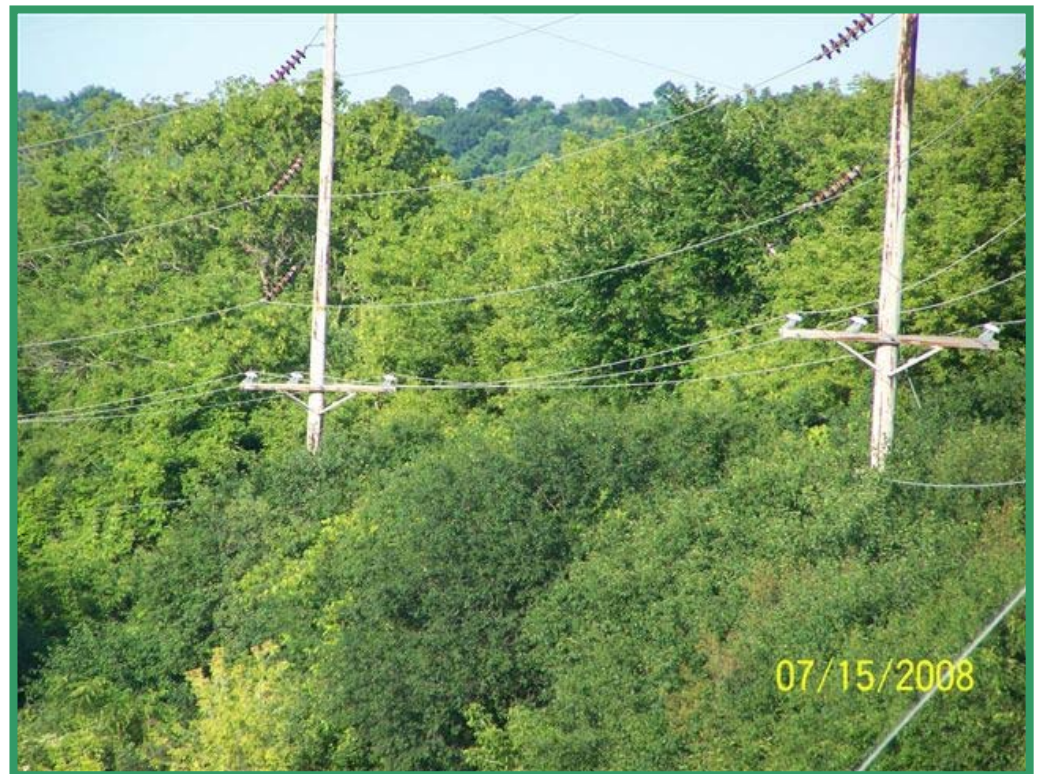
Interconnection: 7-mile, 115 kV line to strengthen transmission system in the Minocqua-Woodruff

area

- Open house 3/5/09 to present t-line corridors

Vegetation management: Increase communication and outreach in advance of work

- Manage expectations; minimize surprises
- Achieve “informed consent”
- Prevent escalation, legal challenges
- Avoid media attention



Tactics that are not effective with property owners

- Hiding behind federal government requirements
- Telling property owners that ATC could be fined for tree-related outages
- Exclusively using ATC's easement rights as justification for the work

More Effective Messages

- ***Safety and Reliability***
- ***ATC must maintain electric service reliability*** by taking steps to eliminate risks
- ***ATC's vegetation management standards have changed; align more closely with easement rights***
- ***Past practices of trimming and pruning are no longer adequate in most cases***

Moving Forward

- Continue to develop, refine and improve our process for communication, education and action
- More consistent with other outreach and communication practices
- **ATC is committed to fair and respectful treatment of landowners**



Questions?

Thank you!