



State Regulatory Affairs and Local Relations Update

ATC Customer Meeting

August 20, 2009





CA/CPCN Applications (Filed/Ordered/Under Review)

| <i>Project Name</i> | <i>Date Filed</i> | <i>PSCW Review Status</i> |
|--|-------------------|--|
| Rockdale-W. Middleton New 345 kV Line [CPCN] | 10/16/2007 | Order Received: June 26, 2009 |
| Nelson-Dewey G-T Interconnection [CPCN] | 7/22/2008 | To be Withdrawn Upon Approval of Amended Affiliated Interest Agreement |
| Rebuild Arpin-Rocky Run 345 kV Line [CA] | 9/29/2008 | Order Received: March 16, 2009 |
| Y33 (Brodhead-South Monroe) 69 kV Rebuild [CA] | 9/29/2008 | Order Received: April 9, 2009 |
| Kewaunee Switchyard Improvements [CA] | 11/17/2008 | Order Received: March 12, 2009 |

CA/CPCN Applications (to be filed)

| <i>Project Name</i> | <i>To be Filed 2009</i> | <i>To be Filed 2010-2013</i> |
|---|------------------------------------|---|
| Canal-Dunn Road New 138 kV Line [CPCN] | Nov | |
| Point Beach Nuclear Plant Uprate Interconnection [CA] | Dec | |
| | | |
| Clear Lake-Woodmin T-D Interconnection & 115 kV Line [CPCN] | | Apr 2010 |
| Monroe County-Council Creek 161 kV Conversion [CPCN] | | Apr 2010 |
| | | |
| Dykesville-Sawyer 69 kV Line Y-21 Rebuild [CA] | | Mar 2011 |
| | | |
| South Lake Geneva-North Lake Geneva - Rebuild 69 kV Lines for 138 kV Operation + New 138 kV Line [CPCN] | | Jan 2012 |
| Colley Road-Brick Church 69 kV Line Y-32 Rebuild/Uprate [CA] | | Jan 2012 |
| | | |
| West Middleton-Blount 69 kV to 138 kV Conversion [CPCN] | | Feb 2013 |
| Dunn Road-Egg Harbor 69 kV Line [CA] | | Jun 2013 |



Future Projects

- Upper Midwest Transmission Development Initiative:
 - La Crosse-Madison 345 kV Line
 - Iowa-Madison 345 kV Line
- Madison-Milwaukee 345 kV Line
- 345 kV System Improvements to Support New Wind Generation
- D-T Interconnections
- G-T Interconnections
- Asset Maintenance Projects

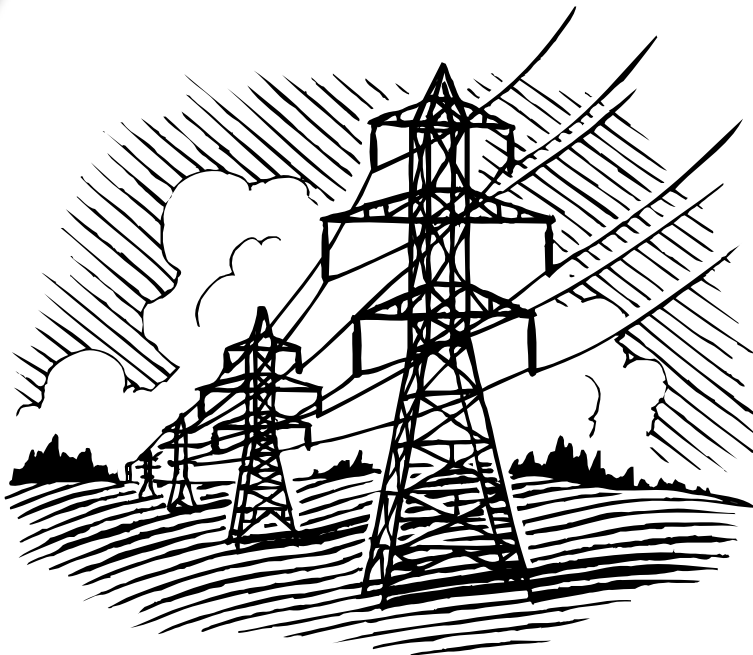


Smart Grid Grant Applications to U.S. Department of Energy

- Phasor Measurement Units Project
- Enhanced SCADA and PMU
Communications Backbone Project
- Power Flow Control Project



Communication and Public Outreach

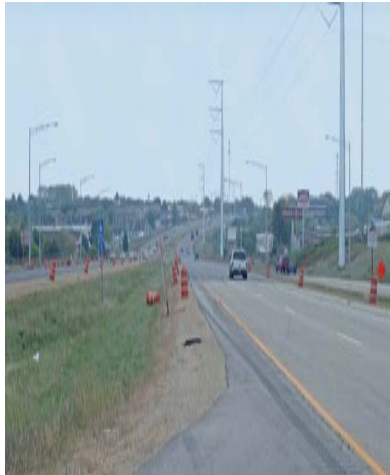


Sarah Justus
Local Relations



Major 345 kV Projects

- **Rockdale-West Middleton (Dane County)**
 - Three years of public outreach pre-filing
 - CPCN issued late June, 2009
 - Going forward:
 - Public outreach continues – managing expectations
 - Final design through summer 2010, ROW acquisition through summer 2011; construction summer 2011-2013
 - Pre-construction open houses and ongoing communication





Major 345 kV Projects (cont'd)

- **Paddock-Rockdale Line (Dane & Rock Counties)**
 - “Access” project to facilitate MISO regional market
 - CPCN issued June 13, 2008
 - Construction under way
 - In-service next spring - 2010

Major 345 kV Projects (cont'd)

- **Gardner Park-Central Wisconsin & Morgan-Werner West Lines**
 - The projects are on schedule to meet their planned in-service dates of Dec. 1, 2009
 - Last foundation poured 8/1/2009
 - Structure along Wolf River had been delayed due to Bald Eagle nesting





Major 138 kV Projects

- **Fitchburg (Oak Ridge)-Verona (Dane County):**
 - CPCN issued on January 23, 2008
 - Oak Ridge Substation is in service
 - Construction pending on t-line portion of the project; in service in summer 2010
- **N. Madison-Huiskamp (Waunakee & Dane Counties):**
 - In service as of May 2009



Major 138 kV Projects (cont'd)

- **Cranberry-Conover-Iron River-Plains (Vilas, Forest, Florence—and UP Michigan):**
 - Segments 1 & 2 in-service
 - Segment 3 –in-service scheduled for October 2009
 - Segment 4 – engineering ongoing; construction start in November 2009; in-service June 2010
- **Jefferson County:**
 - NEV issues resolved; distribution to be buried on opposite side of road
 - T-Line construction along I-94 is underway
 - Southern portion in service in July 2009; northern portion November 2009



Public Outreach on Other Projects

- **Canal – Dunn Road:**
 - 8-mile, 69/138 kV lines (Sturgeon Bay to the Town of Sevastopol)
 - Open house in fall 2009 prior to CPCN application filing
- **Clearlake Substation – Woodmin:**
 - 7-mile, 115 kV line transmission – distribution interconnection
 - Open house 7/15/09 to refine proposed corridors



Public Outreach for Renewable Projects

- A lot of what we do will be the same
 - Extensive public involvement
 - Routing and siting open houses and related communication
- Different tools for talking about need relative to renewable power
 - More focus on benefits beyond reliability
 - Who is the end user/beneficiary?



Questions?

Thank you!

Steve Parker
State Regulatory Affairs

Sarah Justus
Local Relations