



# NERC Alert FAC-008 & FAC-009

## Recommendation to Consider Field Conditions When Rating Overhead Lines

Andy Dolan  
ATC Customer Meeting  
May 24, 2011

Helping to **keep the lights on**,  
businesses running and communities strong®





## NERC Recommendation to Industry

- Ratings methodology considers field conditions (actual clearances)
- Review facility ratings to field conditions
- Report to NERC

# NERC Alert Timetable

## FAC Rating Alert (Recommendation)

**NERC**  
NORTH AMERICAN ELECTRIC  
RELIABILITY CORPORATION

FAC Alert information provided as follows:

- Oct 7, 2010 - Original Alert issued
- Oct 28<sup>th</sup> / Nov 29<sup>th</sup> 2010 – Informational webinars
- Nov 30, 2010 - Revised Alert / Cauley Letter
- Jan 14, 2011 - Q&A document issued
- Apr 26, 2011 – Assessment plan criteria
- May 12, 2011 – Webinar: Discuss assessment plan review criteria and reporting



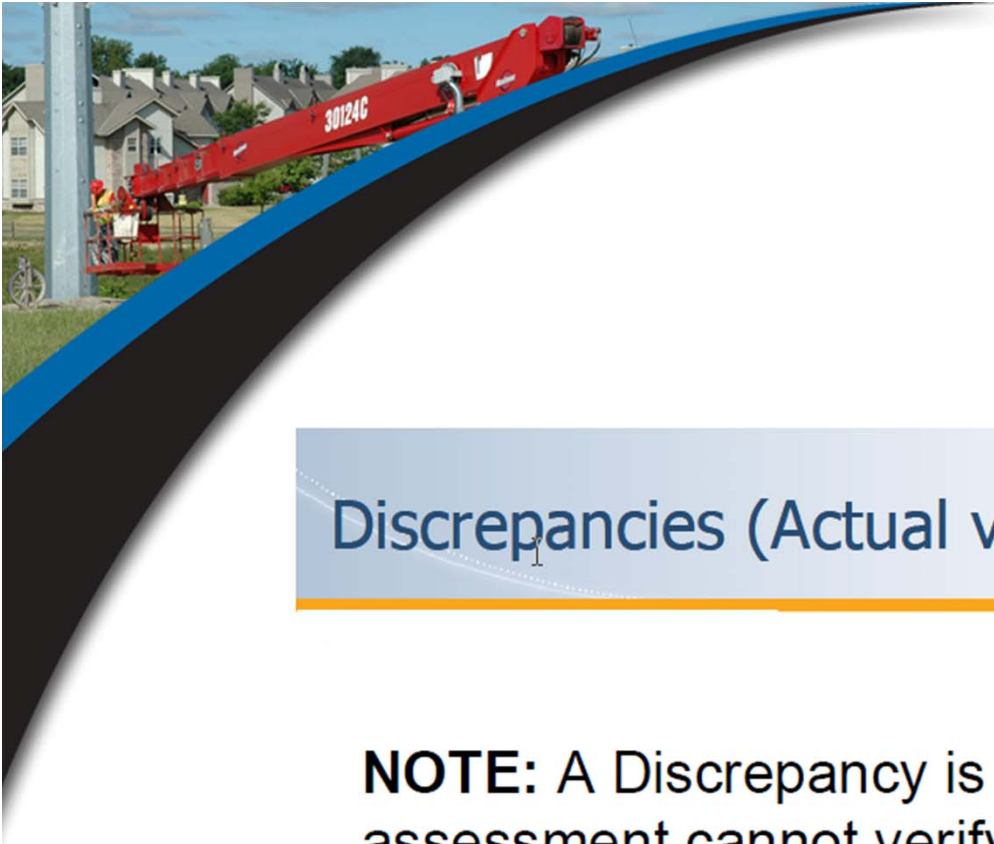
# Alert Recommended Actions

- Complete questionnaire January 18, 2011
- Rank facilities
- Review facility ratings to field conditions
  - High priority by 12/31/2011
  - Medium priority by 12/31/2012
  - Low priority by 12/31/2013
- Develop a plan to ensure long term that field conditions match design



# Issues and Discrepancies

- “Remediation to correct all issues identified during the assessment should occur as quickly as practical but within one year of identification OR obtain approval from NERC to extend deadline.”
- Reporting of discrepancies
  - Report issues resulting in a de rate = discrepancy
  - Report issues
  - At end of 3-year period, enforcement will review response to alert and action taken in determining penalties



# Discrepancy

## Discrepancies (Actual vs. Design)

**NERC**  
NORTH AMERICAN ELECTRIC  
RELIABILITY CORPORATION

**NOTE:** A Discrepancy is when the entity's assessment cannot verify that the actual conditions conform to the entity's design tolerances in accordance with its Facility Ratings Methodology and results in asset derating



# ATC System Status

- Approximately 5900 BES circuit miles
- Approximately 3850 miles adequately as-built
- Approximately 2050 miles to verify



# Study Prioritization

- High=planning identified potential overloads
- Medium= BES > 200kV
- Low= BES < 200kV





# ATC Plan

- BES rating studies by end of 2013
  - 77 in 2011; 31 high priorities
  - 57 in 2012; 22 medium priorities
  - 28 in 2013; 109 low priorities
- Other rating studies



# ATC Rating Methodology

- Clearances are considered
- Special exception ratings



## How Can You Help

- Timely coordination of efforts to correct clearance issues to distribution facilities
- Ensure encroachment process is followed for distribution facilities crossing and parallel to ATC's facilities
- PSC 114.234A4
  - “Supply lines designed to operate at voltages in excess of 35 kV shall not be constructed over dwellings or mobile homes intended for residential occupancy and dwellings or mobile homes intended for residential occupancy shall not be located under such lines.”
  - Electric utilities are prohibited by s.101.865 from extending electric service to premises which are not in compliance with the Wisconsin State Electrical Code



Questions?