



ATC Project Update

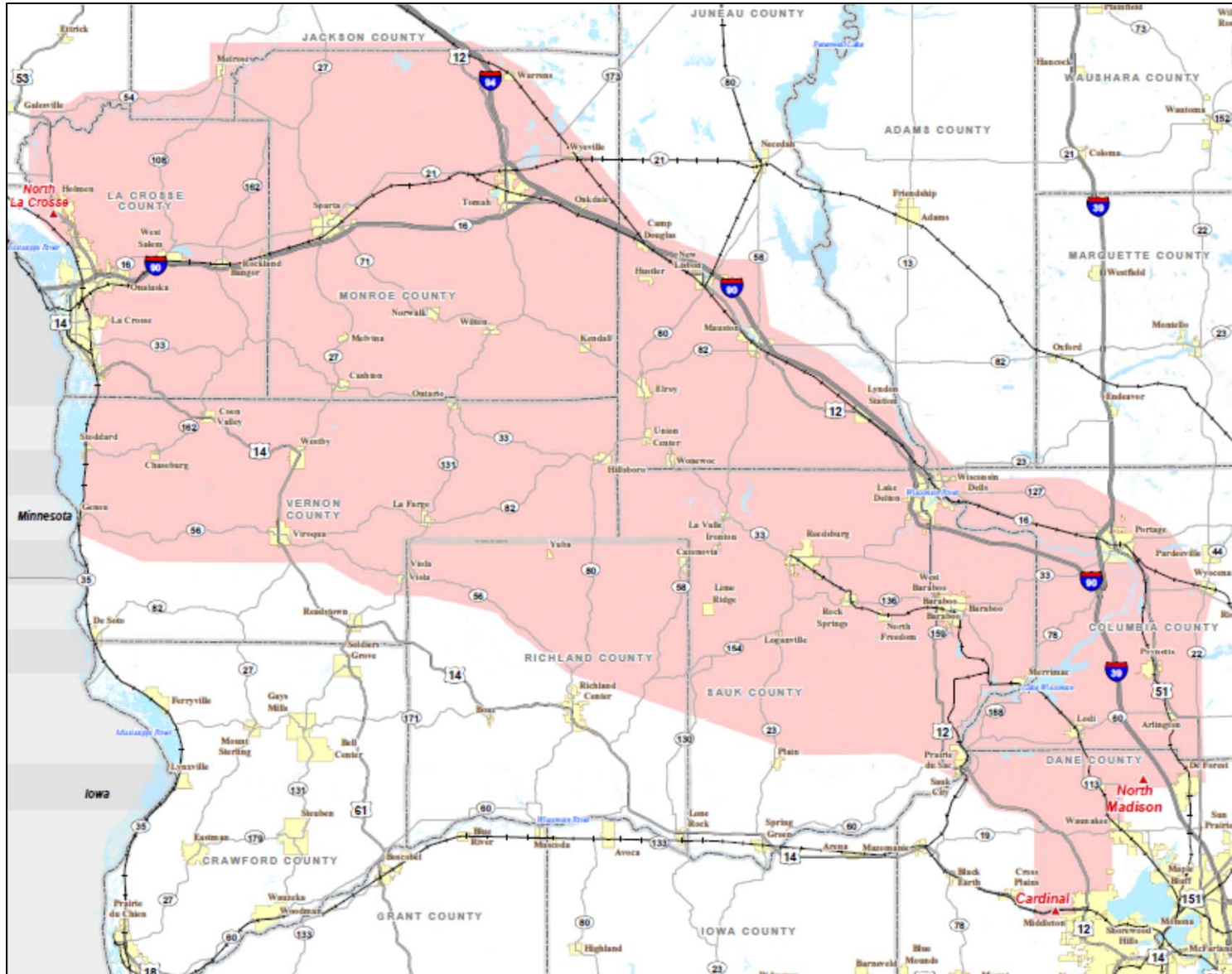
May 2011

Mary Carpenter
ATC Customer Meeting
May 24, 2011

Helping to **keep the lights on**,
businesses running and communities strong®



Badger Coulee Project





Badger Coulee Project

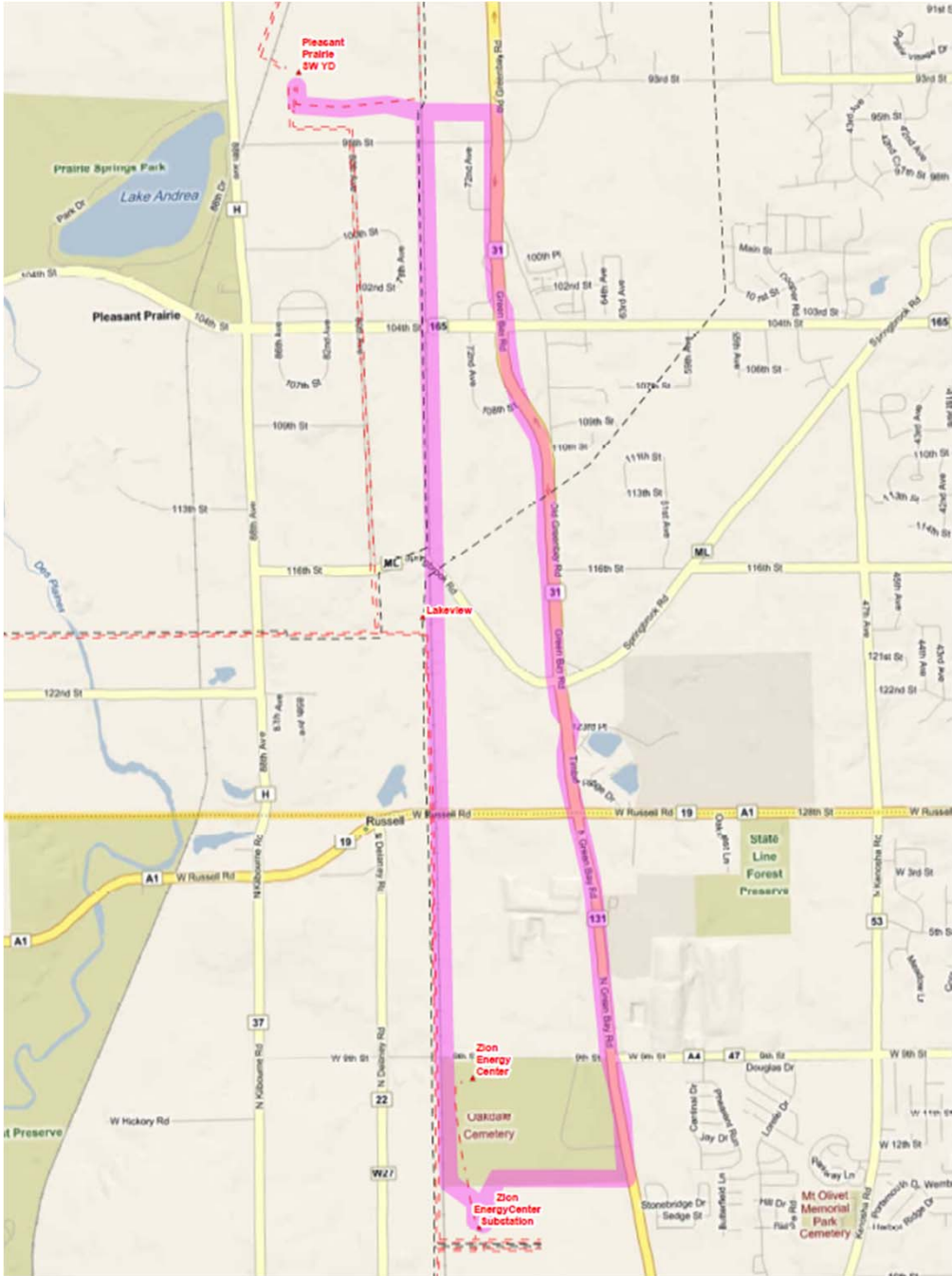
- Approximately 150 miles from northern Dane County to La Crosse area
- Multiple benefits
 - Improve reliability in Southwest WI region
 - Provide economic savings by improving access
 - Improve access to renewable energy
- Approximate cost: \$425 million
- In-service date: 2018



Where Are We Now?

- Open houses in Sept/October 2010 introduced the project as a broad study area
 - Over 1800 attendees at 8 open houses
- Second round of open houses coming up last two weeks in June will identify a number of potential corridors
- Public outreach will continue through 2012
- Application filing anticipated in 2013

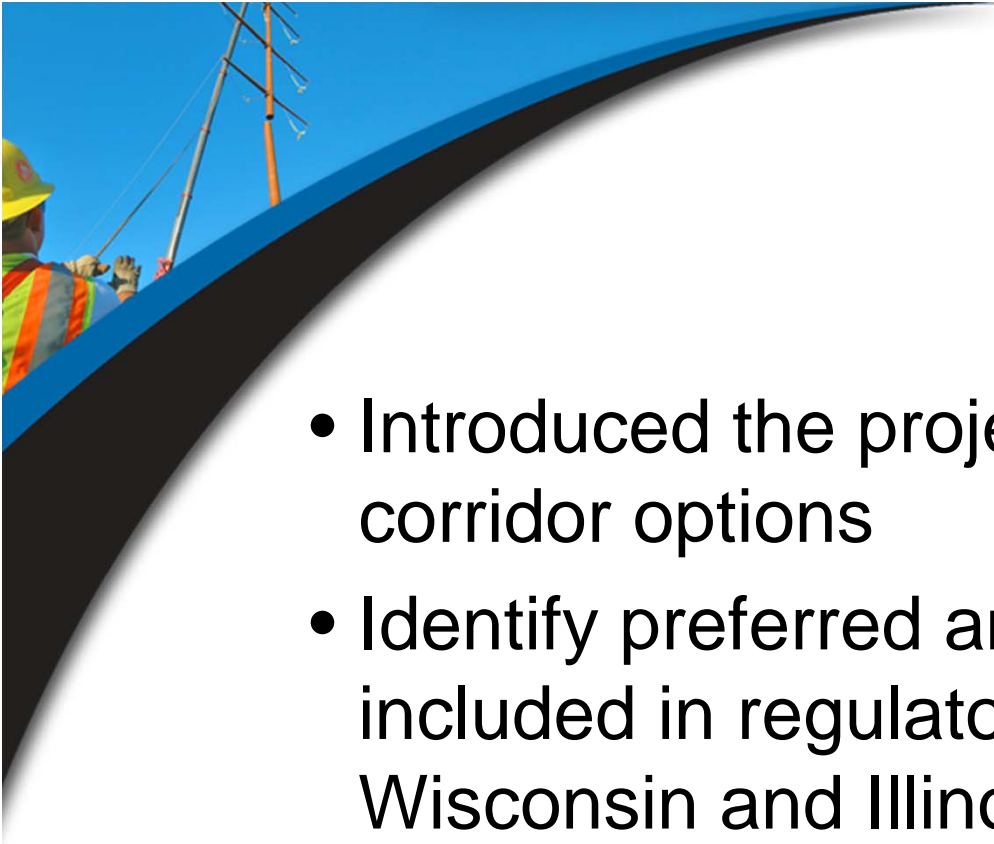
Pleasant Prairie to Zion Project



Pleasant Prairie to Zion Project

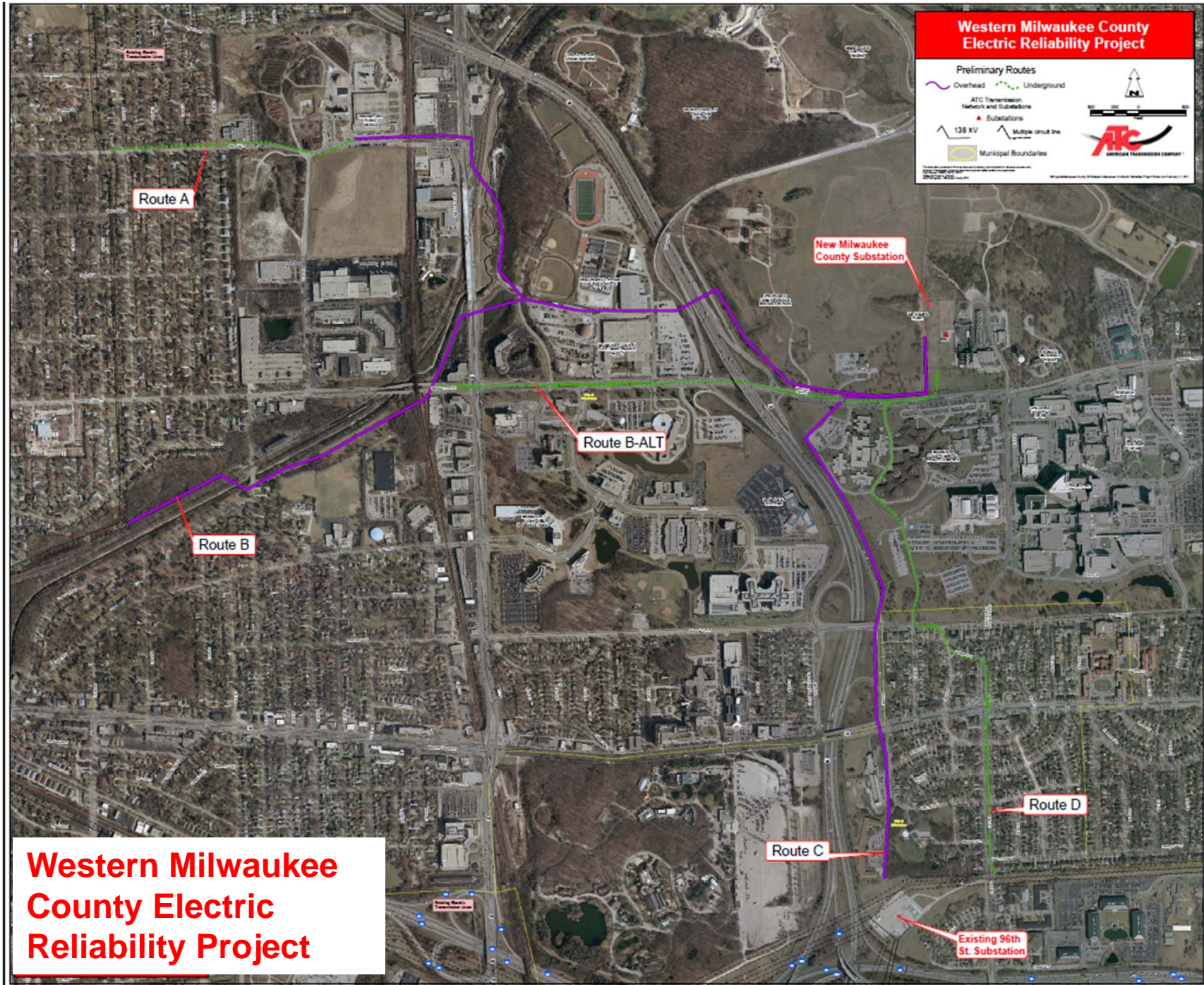
- Approximately 5.3 mile, 345,000-volt transmission line from Pleasant Prairie Substation to Zion Energy Center Substation
- Benefits:
 - Relieves congestion in the region
 - Enables most efficient generators to supply power
 - Strengthens access and market
- Approximate cost: \$21 million - \$25 million
- In-service date: early 2014





Where Are We Now?

- Introduced the project in April with two route corridor options
- Identify preferred and alternate routes to be included in regulatory filings in both Wisconsin and Illinois in late 2011
- Public outreach continues





Western Milwaukee County Electric Reliability Project

- New We Energies substation adjacent to the existing substation and plant
- Two 2-mile, 138,000-volt transmissions lines
- Need:
 - Addresses forecasted overloads on distribution system
 - Provides critical service to medical complex
 - Strengthens access and market
- Approximate cost: \$35 million
- In-service date: Spring 2015

Where Are We Now?

- Open houses held Fall 2010 and March 2011
- Finalizing routes to be included in regulatory application to be file in early 2012
- Open house in Fall 2011 to show final routes





Questions