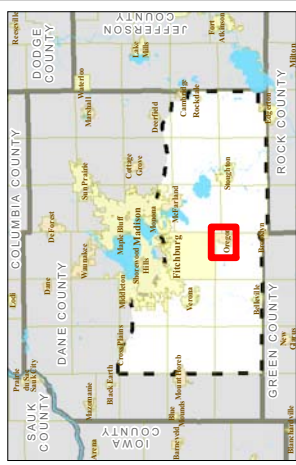


VILLAGE OF OREGON
 Preliminary Corridor Segments
**ROCKDALE TO WEST MIDDLETON NEW 345 KV
 TRANSMISSION LINE PROJECT**



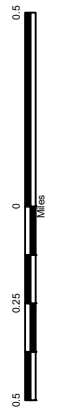
Map Area Shown in Red

**Rockdale to West Middleton New 345 KV
 Preliminary Corridor Segment**
 Segment Number
 Segment Node

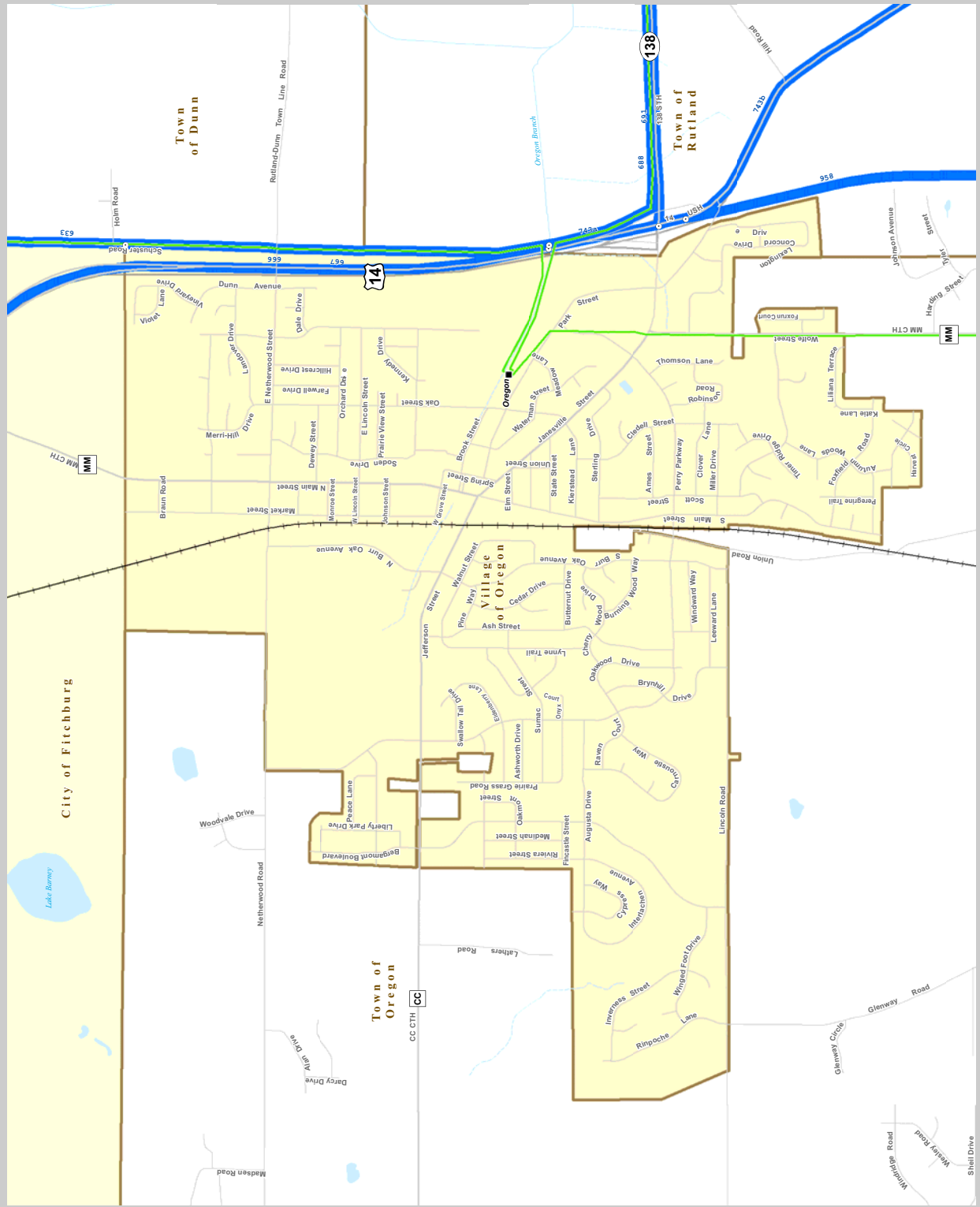
Preliminary corridor segments depicted on this map do not represent corridor width or side of road.
 In the early design stages of this project, preliminary segments to our map or reconsider route segments that had been reduced in priority earlier. For this reason, we encourage all landowners to follow developments on the project through completion of the regulatory review process, anticipated in 2008.

- Existing Transmission Facilities**
- Substation
 - 69 KV Single Circuit, Double Circuit, Underground
 - 138 KV Single Circuit, Double Circuit, Underground
 - 345 KV Single Circuit, Double Circuit
 - Trail, Railroad, Local Road, Highway
 - Town, City, Village
 - Outside Study Area

Sources: ATC, WSP, PSC, DeW. County, US, DeW. County, MPO
 Base Data: GIS, Aerial, Topographic, Digital, County, MPO
 Data: GIS, Aerial, Topographic, Digital, County, MPO



Last Revision: October 2005



The information presented in this map is advisory and intended for reference purposes only. American Transmission Company owned and operated facility locations are approximate.