



Load Interconnection

BUSINESS PRACTICE

ATC works with its customers to accommodate all requests for distribution interconnection utilizing a combination of informal and formal mechanisms, in adherence with least-cost and joint planning principles. This process may require the use of any or all of the following forms.

- 1) A Load Interconnection Request Form (LIRF);
- 2) A Load Interconnection Project Commitment Agreement (LIPCA);
- 3) A Load Interconnection Request Change Form (LIRF Change Form).

Baseline joint planning interactions, as outlined in the Distribution - Transmission Interconnection Agreement (T-D IA), incorporate regular least cost joint planning meetings with the Load Serving Entity (LSE), and regular customer submission of updated load forecast information, including informal advance notice of anticipated new or expanded Transmission - Distribution (T-D) interconnections. Requestor initiates the process of officially pursuing an interconnection construction project by submitting a completed LIRF to ATC. At their initiative, Requestor enters into a LIPCA to formally engage ATC resources and define firm construction commitments for both parties.

SCOPE AND APPLICABILITY

As part of the routine joint planning process, all ATC customers are required to annually provide ATC with 10-year load forecasts that reflect intended facility expansions or new interconnections. The potential expansions or interconnections reflected by these load forecasts are logged into ATC's T-D interconnection queue and incorporated into general transmission planning activities, but no formal action (such as design engineering, specific impact study or preparation for any regulatory filing) is taken by ATC to facilitate this interconnection until a LIRF is submitted to ATC and a LIPCA is established. Customers are encouraged to share their knowledge of proposed interconnections and load forecasts with their respective ATC Zone Planner through regularly scheduled meetings and ad hoc meetings in advance of filing a LIRF.

To promote and uphold the principles of least-cost and joint planning, ATC Zone Planners support the following process that is a precursor, in many instances, to

the formal load interconnection request process. ATC will work to consistently improve this process, which consists of the activities listed below:

- At regular intervals, ATC's Transmission Planning Manager – Reliability Group will contact the appropriate LSE Planning representative(s) to discuss current and forecasted load, and possible interconnection issues. Requestors with numerous T-D requests will be contacted most frequently.
- ATC will offer LSE regular meetings with ATC planners 3 or 4 times during the year, or as needed, to help foster communication between ATC and LSE planners. This would apply particularly to Requestors with numerous T-D requests.
- ATC will continue to encourage the LSE planners to invite the appropriate ATC planner to screening/scoping meetings the LSE may hold internally or externally to develop its T-D needs and solutions.
- ATC Planning will contribute to these screening meetings by explaining transmission plans for the distribution area being scoped, bringing additional ATC subject matter experts, and by discussing known or easily determined impacts of LSE plans on the transmission system.
- LSE Planners and contacts are also encouraged to call the ATC Reliability Group Manager or the appropriate Zone Planner at any time to informally discuss ideas and relevant issues that might have an impact on transmission needs.

In cases where a Requestor may require a preliminary budgetary estimate or cursory assessment of the feasibility of a proposed project, they should contact their ATC Zone Planner to arrange a meeting at which the known details can be discussed.

When Requestor determines that they are ready to jointly pursue the construction of a new T-D interconnection or significant modification of an existing T-D interconnection, the Requestor must submit a completed LIRF to ATC. Within 10 days of the receipt of a LIRF, ATC will acknowledge the receipt of a LIRF and, if necessary, indicate any areas in which the LIRF is incomplete. Within 60 days of the receipt of the completed LIRF, ATC will initiate a planning and scoping meeting with the Requestor to jointly determine an outline for preliminary assessment of the request including possible ATC and Requestor system reinforcements that, based on that preliminary analysis, are needed to accommodate the request.

After the planning and scoping meeting takes place, ATC will provide the Requestor with a LIPCA for execution to be returned by the Requestor within 60 days of receipt or such other date as mutually agreeable to both parties. Requestor may change, add to or withdraw their Load Interconnection Request at any time prior to the execution of a LIPCA. The LIPCA represents formal approval of the request from ATC and identifies a level of commitment by both

parties for when resources must be allocated to site, engineer, design, and procure for the proposed interconnection. The LIPCA will also include any remaining study requirements, the timeline for any necessary regulatory approvals, preliminary design, general location, common facility arrangements and the preliminary construction schedule.

1. Load Interconnection Requests. This practice applies to all load interconnection requests, whether included in previous load forecasts provided by the Requestor to ATC, or otherwise, including load interconnection requests from currently interconnected local distribution companies, municipalities, cooperatives or parties seeking to interconnect a new point of receipt to ATC's transmission system, as allowable by law. Any change to a LIRF (e.g. a delay in in-service date) must be communicated to ATC in writing, by use of the LIRF Change Form or other acceptable method (e.g. letter or electronic mail). ATC will determine LIRF priorities jointly with the LSE considering both the requested in-service date and the LIRF request date.

2. Load Interconnection Request Form (LIRF). ATC requires that a Requestor seeking a new load interconnection or significantly modifying an existing interconnection, complete a LIRF (attached as Exhibit 1) to initiate the formal project joint planning process and initial project assessment. The need for the LIRF and the timing of its completion should be determined jointly with input from both ATC and the LSE. The LIRF should be accompanied by a cover letter outlining the Requestors' intent and a statement of need, attachments of the corresponding site map, one-line drawings of the substation, and a summary of any distribution studies that have been conducted. If the LIRF is incomplete, ATC will notify the Requestor of the deficiency electronically or in writing within 10 days of receipt of the LIRF. The requested in-service date cannot be evaluated by ATC unless all information required to be included in the LIRF is received by ATC. If all required information is not available at the time the LIRF is submitted, the Requestor should contact their respective ATC Zone Planner as soon as possible. Any delay in fully completing the LIRF may affect ATC's ability to meet the anticipated in-service date.

3. Load Interconnection Project Commitment Agreement (LIPCA). After receipt of a completed LIRF, ATC will schedule a planning and scoping meeting with the Requestor. This meeting will enable ATC to prepare and provide a LIPCA (attached as Exhibit 2) to be executed by both ATC and the Requestor. The LIPCA is to be signed by the Requestor within 60 days of receipt from ATC, or another mutually agreed upon date. The LIPCA delineates the responsibilities of both parties for actual costs incurred in studying, permitting, establishing the project construction schedule, design and configuration of the interconnection facilities, common facilities designations and any required financial terms as well as the commitment of both the Requestor and ATC to make a good faith effort to meet the requested in-service date. Upon completion of the study, design and

engineering, and the receipt of any required regulatory or other authorizations, Requestor and ATC will also execute a T-D IA (or amend the existing T-D IA) relating to the operation, maintenance and other elements of the proposed new or significantly modified interconnection point.

4. Load Interconnection Request “In-Service” Dates. To enable ATC to meet the needs of the Requestor, a LIRF must be received sufficiently in advance of the requested in-service date to allow appropriate time to complete the evaluation, design, necessary routing, siting, permitting and construction of the new interconnection. The need for and timing of the LIRF application should be determined jointly between ATC and LSE during the regular joint planning meetings. The amount of advance notice required will typically be related to the proximity of the new interconnection to ATC’s existing facilities as regulatory approval, rights-of-way and other permits may be needed for ATC to fulfill a load interconnection request. ATC and the Requestor will discuss in-service dates as part of the solutions scoping process to determine feasibility and seek to find mutually acceptable dates. Contingent upon (i) ATC’s timely receipt of the completed LIRF, (ii) execution of the LIPCA and T-D IA, as needed, (iii) obtaining necessary regulatory approval and appropriate rights-of-way, and (iv) ATC’s ability to schedule necessary outages, ATC shall construct the required interconnection facilities under the terms of the LIPCA.

ATC offers the following guidelines for advance notice and LIRF application based on the ATC siting and permitting process, which includes public outreach, environmental review, regulatory filing, agency review and approval, real estate acquisition, and construction:

- A. For load interconnections (69, 115, 138 or 161kV) requiring transmission line extensions of less than 500 feet, the LIRF should be submitted to ATC 18 months in advance of the expected in-service date.
- B. For load interconnections, at voltages above 100kV, requiring transmission line extensions of 500 feet or greater, but less than 1 mile, or transmission line extensions one mile or greater, but under 100kV and under ATC’s Certificate of Authority cost filing threshold, the LIRF should be submitted to ATC 24 months in advance of the expected in-service date.
- C. For load interconnections requiring transmission line extensions of 1 mile or greater, at voltages above 100 kV, the LIRF should be submitted to ATC 36-54 months in advance of the expected in-service date.

- D. For unique load interconnections potentially involving longer lead-time items (e.g. gas insulated substations, underground transmission, 345 kV interconnection, etc.) or major system reinforcements, the LIRF should be submitted to ATC 54 months in advance of the expected in-service date.

ATC will work with Requestor in a joint planning and decision-making process to ascertain the preferred location(s) of interconnection points and related distribution and transmission facilities. The goals of this joint process include (a) consideration of both the construction and operating costs (for transmission and distribution facilities), environmental factors, and any other factors identified by ATC and Requestor as relevant on a particular project; (b) providing adequate opportunity for public opinion on facilities' locations to be heard and considered; and (c) to the greatest extent possible, cooperating on the timing for making particular siting decisions and for taking particular actions (e.g., land acquisition, permit application) in order to streamline the siting process and reduce the overall time required to select and gain any needed approval of the site(s) for interconnection and related facilities.

ATC recognizes that in order to meet these goals, different approaches to the siting process will be needed in different situations. For example, in some cases it may be preferable to secure a distribution interconnection site before ATC files an application for regulatory approval and finalizes a transmission route; in other cases it may be preferable to present siting alternatives and to finalize the distribution site only after the transmission route is determined. To address the needs of both parties in this process, a siting plan will be jointly developed early in the joint planning process which outlines the preferred approach to be followed by both ATC and Requestor on site selection, site acquisition, and obtaining regulatory approvals.

5. Unforecasted Load Interconnection Requests. For load interconnection requests representing unforecasted load additions (e.g. load interconnections not accounted for in the Requestor's previous annual load forecast submitted to ATC or if the Requestor is not currently interconnected with ATC), ATC will perform a preliminary feasibility analysis of the proposed interconnection at no cost to the Requestor. The Requestor will be required to follow the LIRF and LIPCA processes outlined above. Based on the results of the preliminary feasibility analysis, it may be determined that additional studies are required. The Requestor will be responsible to pay for the estimated cost of any additional studies prior to ATC beginning the work. The Requestor may also need to pay any true-up charges in the event that actual charges exceed the estimated amount. All applicable advance payments for un-forecasted load interconnections will be reimbursed when the project is complete and the interconnection is energized. All advance payments will be forfeited if an unforecasted load interconnection project is terminated by the Requestor. ATC will make all reasonable commercial effort to accommodate unforecasted load

interconnection requests, but ATC can provide no assurance until the evaluation of the interconnection is completed.

6. Regulatory Approval. In the event that the load interconnection request requires regulatory approvals (such as a Certificate of Authority [CA] or Certificate of Public Convenience and Necessity [CPCN] from the Public Service Commission) or other permits or approvals from any other authority in association with the location or construction of the interconnection facilities, the Requestor shall cooperate in seeking such regulatory or other approvals by providing necessary information and participating in any regulatory proceeding or process to demonstrate need for the project, if requested to do so by ATC. This includes providing appropriate distribution project justification and may include filing as a joint applicant. ATC shall cooperate in seeking such regulatory or other approvals by providing necessary information and participating in any regulatory proceeding or process to demonstrate need for the project, if requested to do so by the Requestor.

Business Practice Number: 0505 Original Effective Date: 07/28/05 Revision Date: 11/07/05		Revision: 1
TITLE:	<i>Load Interconnection</i> <i>Approved by: Walter Woelfle</i>	Page 6 of 6

Exhibit 1 Load Interconnection Request Form (LIRF)

INSTRUCTIONS:

1. Request must be completed in its entirety (except for optional or non-applicable fields)
2. Queue date will be assigned when the completed, signed request is received at American Transmission Co.
3. The request can be submitted any of the following ways:
 - a. Email to: Pam Beetham at pbeetham@atcllc.com
 - b. Mail to: American Transmission Co., Attention: Pam Beetham, 2 Fen Oak Ct., Madison, Wisconsin 53718
 - c. Fax to: American Transmission Co., Attention: Pam Beetham at (608) 877-3602

Type of Project (please check one): <input type="checkbox"/> New station		<input type="checkbox"/> Add Transformer	<input type="checkbox"/> Replace Transformer	<input type="checkbox"/> Other
REQUESTER INFORMATION (complete this section for all project types)				
Requester Name				
Telephone Number				
E-mail Address (optional)				
Company's Official Name				
Company's Street Address				
City				
State				
Zip Code				
Contact Name (if different than Requester)				
Telephone Number (include area code)				
E-mail Address (optional)				
LOAD INTERCONNECTION LOCATION INFORMATION				
State:	County:			
New or Existing Substation Name:	Specific Location (street address, other):			
Maximum distance from existing transmission facilities:				
INTERCONNECTION INFORMATION (complete this section for all project types)				
Interconnection voltage:	Requested in-service date:			
Proposed substation configuration (please provide a one-line diagram)				
Projected load (see attached table)	Nature of load (industrial, residential, etc.):			
Specification of any devices that may produce harmonic currents or voltage flicker:				
Significant harmonic current (attach information)				
Voltage fluctuation or imbalance (attach information)				
Transformer Specifications				
Winding voltages:	Winding types (delta, wye):			
Continuous/30 min. overload ratings (MVA):	Load tap changer specifications (if applicable):			
Capacitor banks (MVAR):	Capacitor bank switching (timer, voltage, etc.):			
Nameplate impedance:	Load loss (watts):			
Multiple transformers at site now or future?				
STATEMENT OF NEED FOR PROJECT (complete this section for all project types)				
Please include any information on the least-cost alternative rationale.				



Substation Name:
Projection of Real Power Peak Requirements (MW)

	In-service Year	Year 2	Year 3	Year 4	Year 5	Year 6	Year 7	Year 8	Year 9	Year 10
January										
February										
March										
April										
May										
June										
July										
August										
September										
October										
November										
December										

Projection of Reactive Power Peak Requirements (MVAR)

	In-service Year	Year 2	Year 3	Year 4	Year 5	Year 6	Year 7	Year 8	Year 9	Year 10
January										
February										
March										
April										
May										
June										
July										
August										
September										
October										
November										
December										

NOTE: Please indicate what other substations' load forecasts would be affected by the proposed substation. Provide updated load forecasts for those affected substations.

EXHIBIT 2 - LOAD INTERCONNECTION PROJECT COMMITMENT AGREEMENT

THIS LOAD INTERCONNECTION PROJECT COMMITMENT AGREEMENT (Agreement) is filed as of _____ by _____, a _____ (Requestor) and American Transmission Company LLC and ATC Management Inc., a limited liability company and corporation, respectively, (ATC). ATC and Requestor each may be referred to as a "Party," or collectively as the "Parties."

ARTICLE I

PARTY REPRESENTATIONS

ATC is a public utility and transmission company under the laws of the State of Wisconsin and owns and operates and electric transmission system and provides transmission service, including the interconnection of substations owned by others. ATC operates its transmission system under provisions of the open access transmission tariff of the Midwest Independent Transmission System Operator, Inc.

Requestor wishes to interconnect with ATC's transmission system and to collaborate in the design, construction and performance of other services necessary for the construction of the new substation and related facilities, but only upon certain terms conditions and limitations.

This Agreement identifies a level of commitment by both parties and delineates the responsibilities of both Requestor and ATC for establishing the project in-service date, conceptual design and configuration of the interconnected facilities, common facilities designations as well as the commitment of both the Requestor and ATC to make a good faith effort to complete the interconnection project with minimal delay.

ARTICLE II

SCOPE AND SCHEDULE

The work provided for under this Agreement shall commence, be completed and the facilities ready to be tested and thereafter placed in service according to the following initial scope and schedule attached as Exhibit A to this Agreement.

After this Project Commitment Agreement has been executed, any request to change the in-service date of an interconnection request 90 days or greater, must be made in writing, using the Load Interconnection Request Change Form.

ARTICLE III

TERMS OF AGREEMENT

- A.** Upon mutual agreement by the parties, it may be determined that the project is to be cancelled or suspended with each being responsible for its own incurred costs up to the point of cancellation or suspension without any invoicing of costs between the parties.

B. Any dispute that may arise between the parties during the interconnection process regarding schedule, scope, cost or any other matter, including unilateral cancellation or delay of the project by a party, shall be subject to the Dispute Resolution procedures of the applicable Distribution - Transmission Interconnection Agreement between the parties.

NOTE: If a Distribution - Transmission Interconnection Agreement does not exist, the Dispute Resolution procedures will be attached as Exhibit B.

**ARTICLE IV
NOTICES**

All Notices required hereunder shall be given in writing and addressed or delivered to the representative(s) specified below. Notices shall be deemed received (i) upon delivery, when personally delivered; (ii) upon receipt, when sent via certified mail, return receipt requested; (iii) the next business day, when sent via overnight courier; and (iv) upon transmittal, when sent via facsimile.

Notices to Requestor:

Notices to ATC:
Attn: Contract Administrator
American Transmission Company LLC
2 Fen Oak Ct.
Madison, WI 53718-8810

THIS AGREEMENT IS ENTERED INTO BY THE DULY AUTHORIZED REPRESENTATIVES OF THE PARTIES WHOSE SIGNATURES ARE SET FORTH BELOW.

AMERICAN TRANSMISSION COMPANY LLC
By its Corporate Manager, ATC Management Inc.

By: _____
Date: _____
TITLE:

INSERT REQUESTOR COMPANY NAME

By: _____
Date: _____
TITLE:

Exhibit A – Preliminary Scope and Schedule

Interconnection Details

ATC contact person: _____ Phone: _____ Email: _____

LSE contact person: _____ Phone: _____ Email: _____

Substation name and location: _____

Voltage: _____

Regulatory Approvals Required: _____

Permits Required: _____

Public Outreach Plan: _____

Interconnection Facilities and System Upgrades: _____

Preliminary project schedule: _____

ATC Budgetary Estimate for its facilities: _____

LSE Budgetary Estimate for its facilities: _____

Common Facility arrangements: _____

In-service date: _____

CAUTION: Any hard copy reproductions of this Business Practice should be verified against the on-line system for current revisions.

Exhibit 3



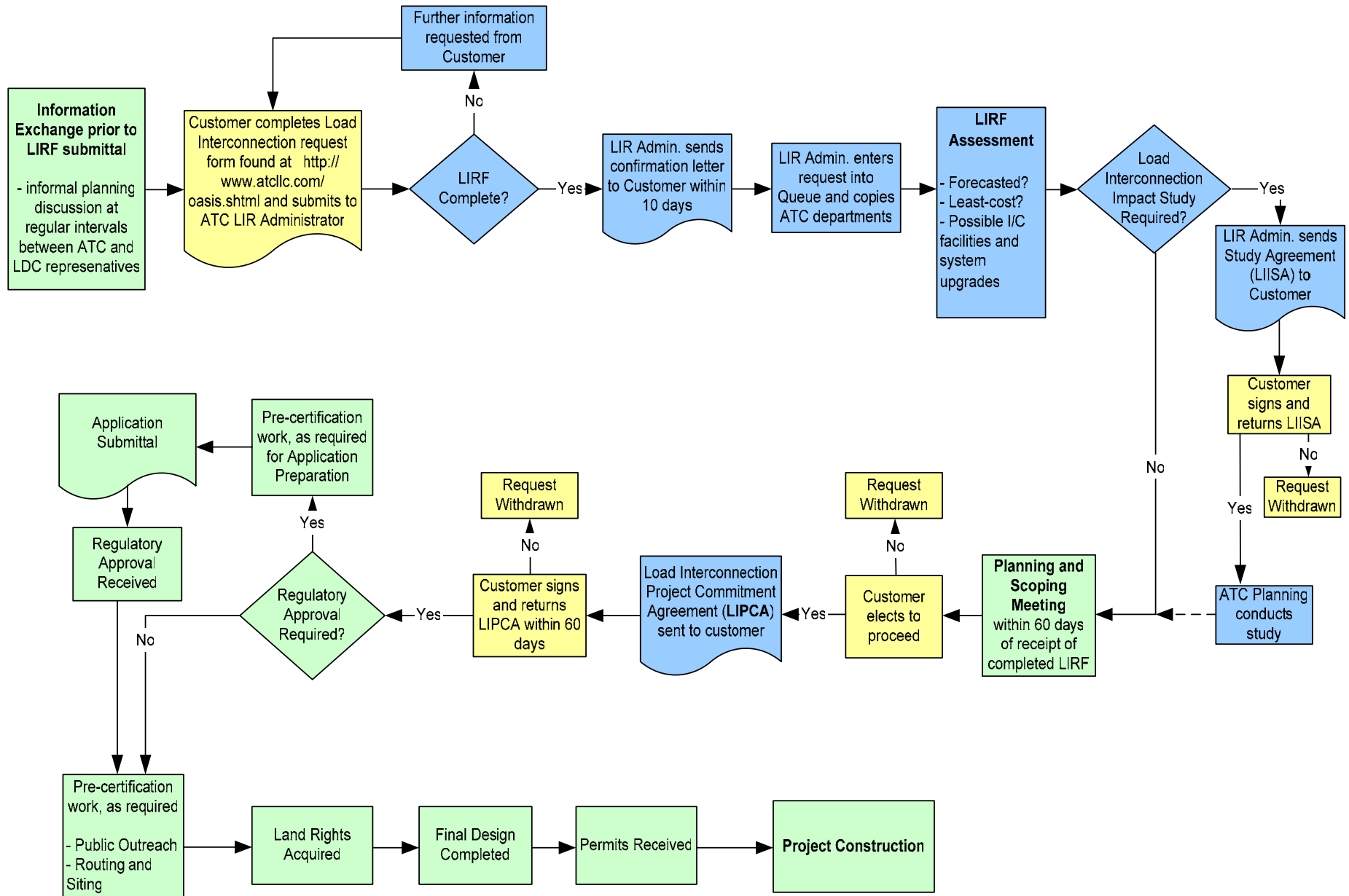
LOAD INTERCONNECTION REQUEST CHANGE FORM

INSTRUCTIONS:

- 1. Request must be completed in its entirety (except for optional or non-applicable fields)
- 2. The request can be submitted any of the following ways:
 - a. Email to: Pam Beetham at pbeetham@atcllc.com
 - b. Mail to: American Transmission Co., Attention: Pam Beetham, 2 Fen Oak Ct., Madison, Wisconsin 53718
 - c. Fax to: American Transmission Co., Attention: Pam Beetham at (608) 877-3602

REQUESTER INFORMATION	
Requester Name	
Telephone Number	
E-mail Address (optional)	
Company's Official Name	
Company's Street Address	
City	
State	
Zip Code	
Contact Name (if different than Requester)	
Telephone Number (include area code)	
E-mail Address (optional)	
LOAD INTERCONNECTION LOCATION INFORMATION	
Change Requested (please check all that apply):	
<input type="checkbox"/> In-service date change	
<input type="checkbox"/> Location/Scope change	
<input type="checkbox"/> Name change	
<input type="checkbox"/> Cancel project	
<input type="checkbox"/> Other	
DESCRIPTION OF CHANGE REQUEST (complete this section for all request types)	

LOAD INTERCONNECTION PROCESS FLOW



CAUTION: Any hard copy reproductions of this Business Practice should be verified against the on-line system for current revisions.